



Stanford University
Global Climate & Energy Project

APS Energy Research Workshop
Portland Oregon
March 14, 2010

Carbon Dioxide Capture and Sequestration in Deep Geological Formations

Professor Sally M. Benson
Energy Resources Engineering Department
Director, Global Climate and Energy Project
Stanford University

Global Challenges – Global Solutions – Global Opportunities



What is Carbon Dioxide Capture and Sequestration and Why is it Important?



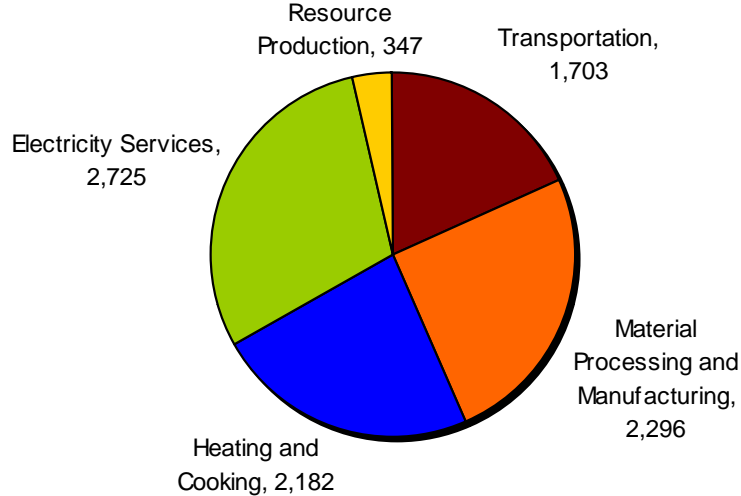
- Carbon dioxide capture and storage technology can slow global warming by reducing carbon dioxide emissions into the atmosphere
- Applicable to the 60% of emissions which come from stationary sources such as power plants
- 85% of today's energy comes from fossil fuels and a rapid transition to low carbon energy sources is difficult and expensive
- Necessary to achieve the rapid carbon dioxide emission reductions



Current Worldwide Sources and Emissions (~7,500 total > 0.1 MT/yr)



Global CO₂ Emissions (Mt C)



Electricity Sector

Fuel	# of Sources	Average Emissions per Source (MT/source)
Coal	2025	3.9
Nat. Gas	1728	0.8 – 1.0
Fuel Oil	1108	0.6 – 1.3

IPCC Special Report, 2005

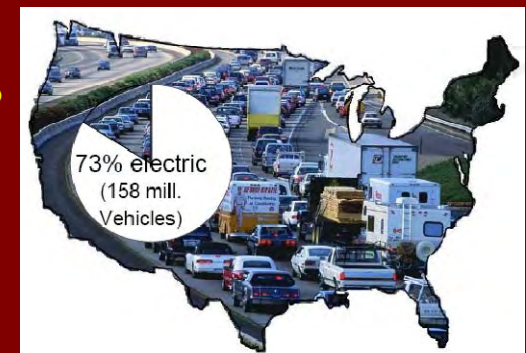
Material Processing & Manufacturing

Source	# of Sources	Average Emissions per Source (MT/source)
Cement	1175	0.8
Refining	638	1.35
Other	736	0.15 – 3.5

IPCC Special Report, 2005

Transportation Sector

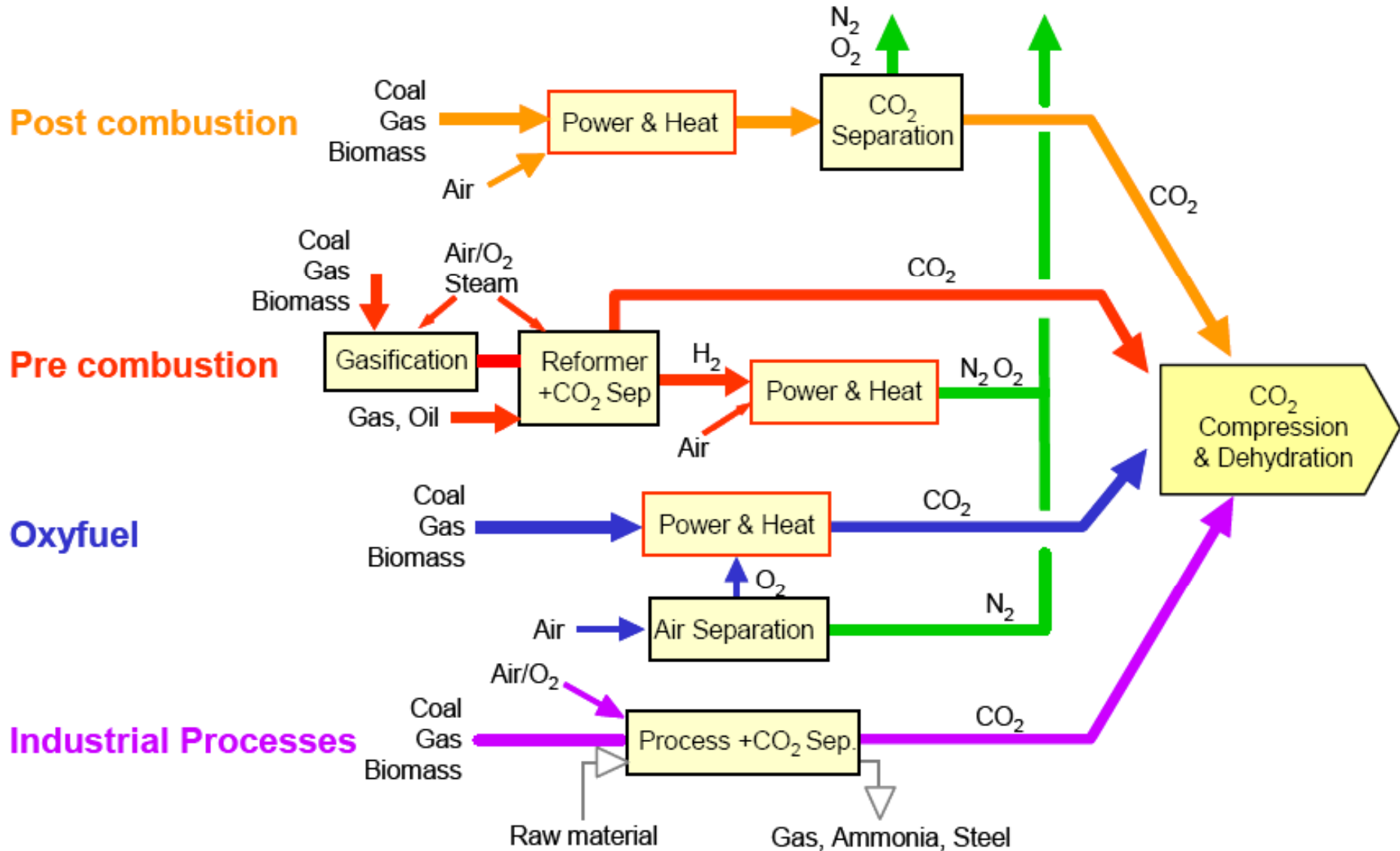
Little today.
Future Potential?



73% of U.S. light duty transport could be powered with existing fleet of power plants, Kintner-Meyer, PNNL, 2007

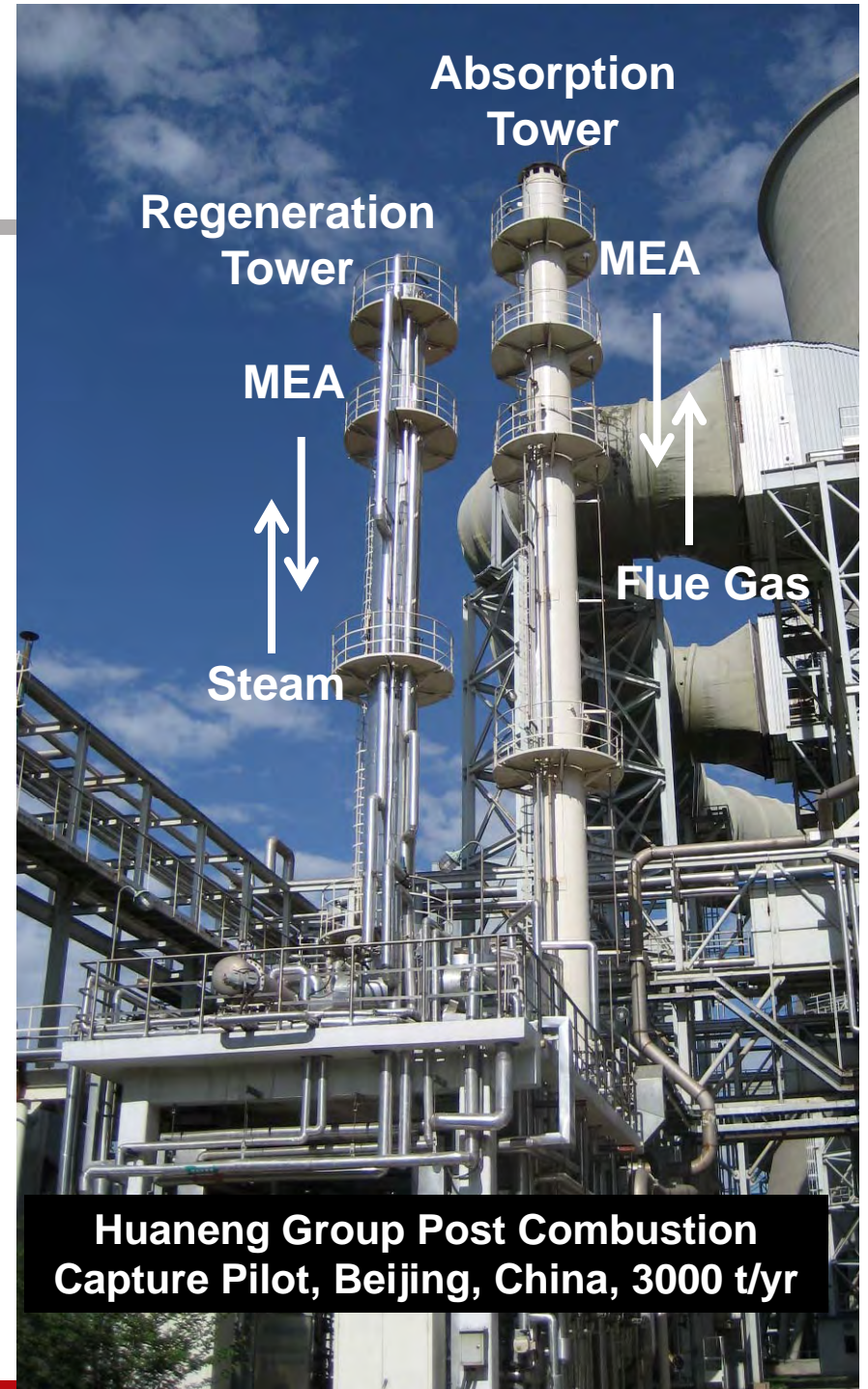
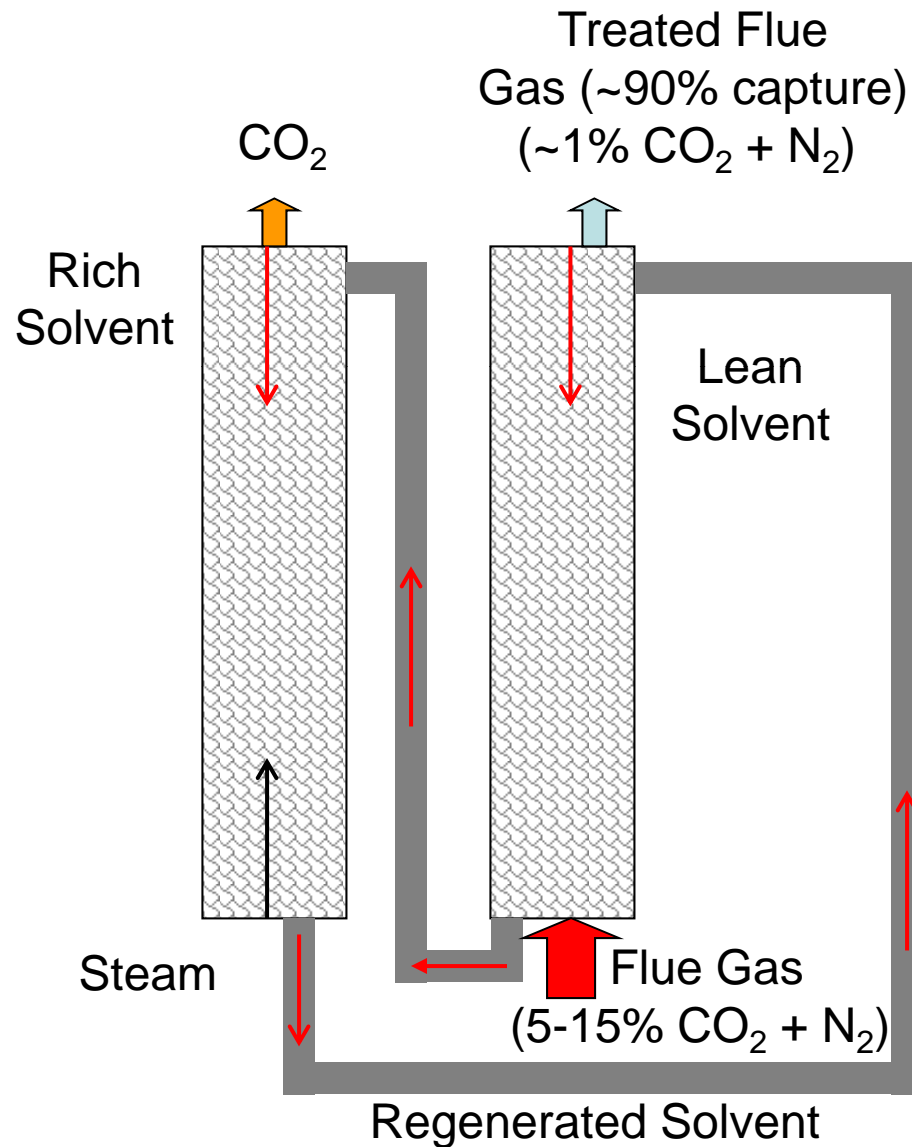


Options for CO₂ Capture



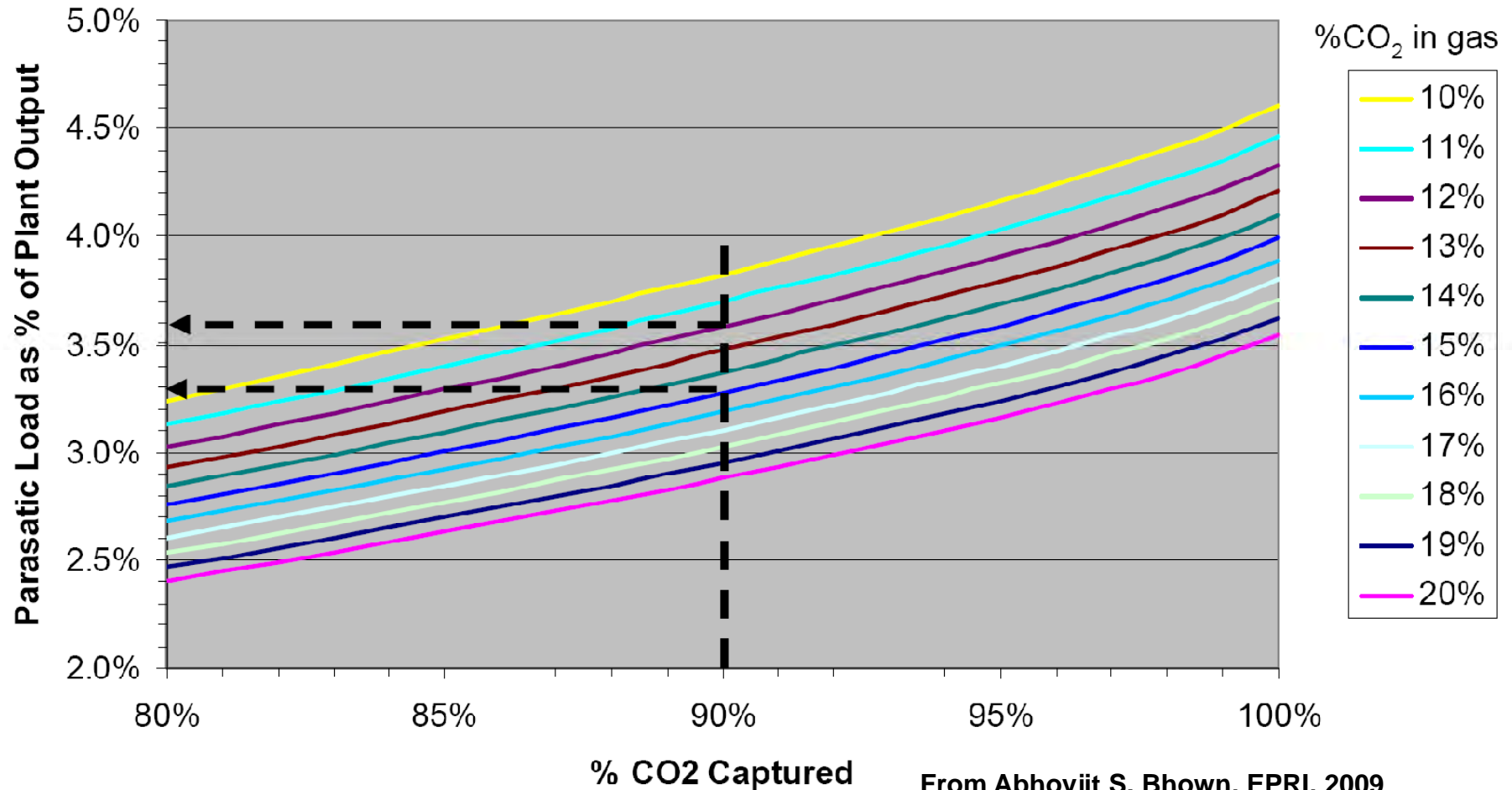


Post-Combustion Capture





Minimum Energy For Capture



In practice, separation is about 5 to 10 times less efficient than the minimum energy requirement. A “good” process could be expected to have from 3 to 5 x minimum energy requirement.



Comparison of Capture Options



Technology	Advantages	Challenges
Post-Combustion	<ul style="list-style-type: none">• Mature technology• Standard retrofit	<ul style="list-style-type: none">• High energy penalty (~30%)• High cost for capture
Pre-Combustion (IGCC)	<ul style="list-style-type: none">• Lower costs than post-combustion• Lower energy penalties (10-15%)• H₂ production	<ul style="list-style-type: none">• Complex chemical process• Repowering• Large capital investment
Oxygen-Combustion	<ul style="list-style-type: none">• Avoid complex post-combustion separation• Potentially higher generation efficiencies	<ul style="list-style-type: none">• Oxygen separation• Repowering



Today's Industrial Capture Technology



- Energy penalty: 10 to 30%
 - Cost
 - \$50 to \$100/tonne CO₂ for the nth plant
 - Significantly more for the 1st plants (\$150 to \$250/tonne CO₂)
 - Cost of electricity generation: 50 to 100% increase
 - Uncertain reliability
 - R&D needed to develop new options and improve existing ones
-



Potential for CO₂ Reuse in the Chemical Industry is Extremely Limited



Rank	Chemical	Estimate +13% for		GWe if equimolar rxn with CO ₂ 90% capture	
		2002 Production Mt *	2007 Mt		Gmol
1	Sulfuric Acid	36.65	41.54	423.54	2.74
2	Nitrogen	30.76	34.87	1244.65	8.06
3	Ethylene	23.67	26.83	838.44	5.43
4	Oxygen	22.04	24.98	890.27	5.76
5	Lime	18.42	20.87	372.24	2.41
6	Polyethylene	16.06	18.20	568.91	3.68
7	Propylene	14.46	16.38	380.27	2.46
8	Ammonia, Anhydrous	13.20	14.96	878.51	5.69
9	Chlorine	11.39	12.91	182.02	1.18
10	Phosphoric Acid	10.81	12.26	125.06	0.81
95	Sodium Bicarbonate	0.54	0.61	7.24	0.05
96	Cyclohexanone	0.54	0.61	6.19	0.04
97	Propylene Glycol	0.53	0.60	7.92	0.05
98	Phthalic Anhydride	0.53	0.60	4.03	0.03
99	Sodium Sulfate	0.51	0.58	4.06	0.03
100	Potassium Hydroxide	0.47	0.54	9.55	0.06
TOTAL		443.08	502.16	10339.12	66.95

Global top 100 chemicals produce a total of 0.5 Gt/yr; CO₂ emissions are 30 GT/yr. Therefore, opportunities for CO₂ reuse in the chemical industry are limited.



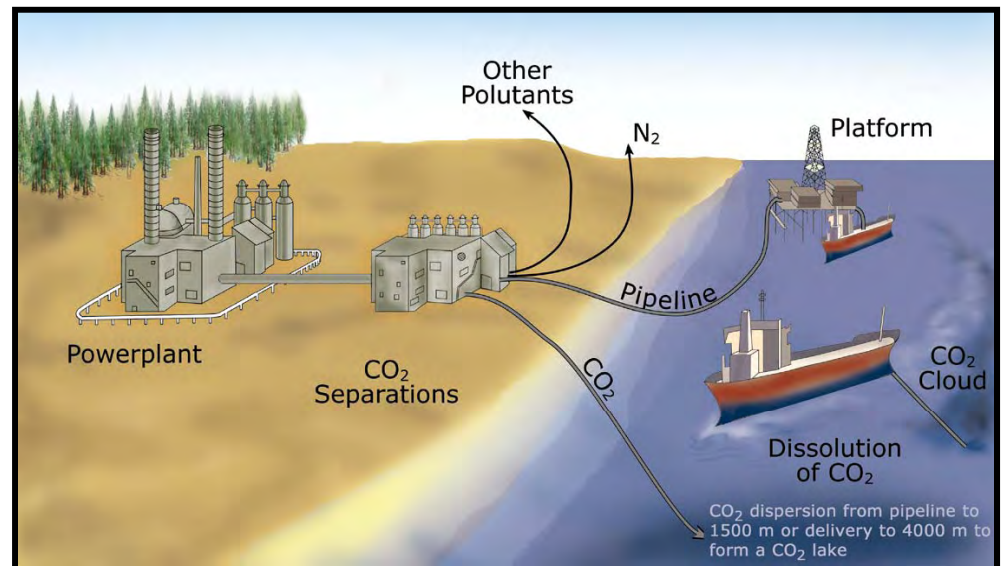
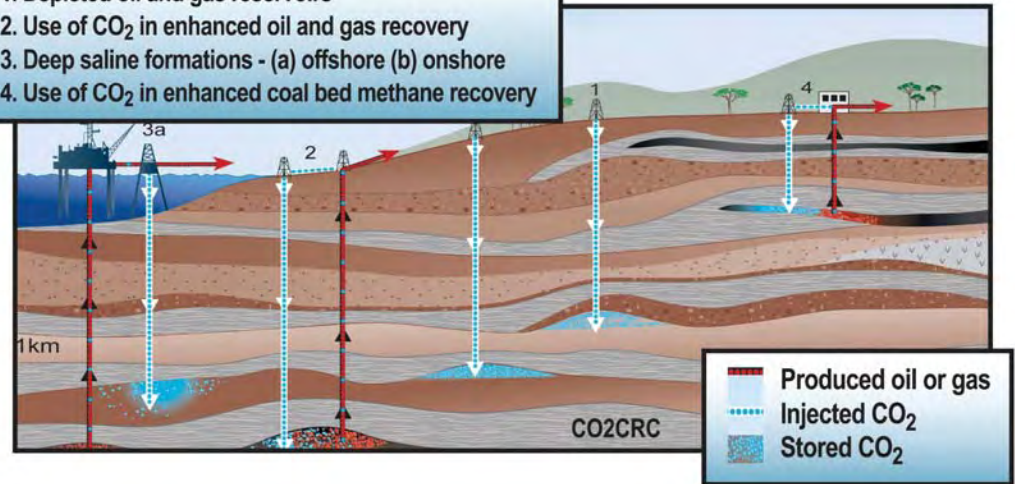
CO₂ Sequestration Options



- Deep geological formations
 - Oil and gas
 - Coal
 - Saline aquifers
 - Basalts
 - Deep ocean sediments
- Oceans
 - Direct injection
 - Ocean fertilization
 - Bicarbonate formation
- Solids
 - Minerals
 - Cement
 - Other

Overview of Geological Storage Options

1. Depleted oil and gas reservoirs
2. Use of CO₂ in enhanced oil and gas recovery
3. Deep saline formations - (a) offshore (b) onshore
4. Use of CO₂ in enhanced coal bed methane recovery





Generic Sequestration Challenges



- Huge scale of emissions
 - 7 x annual petroleum production
 - Establishing permanence
 - 100's to 1000's of years
 - Environmental risks
 - Cost
 - Energy use
-



Comparison of Today's Sequestration Options

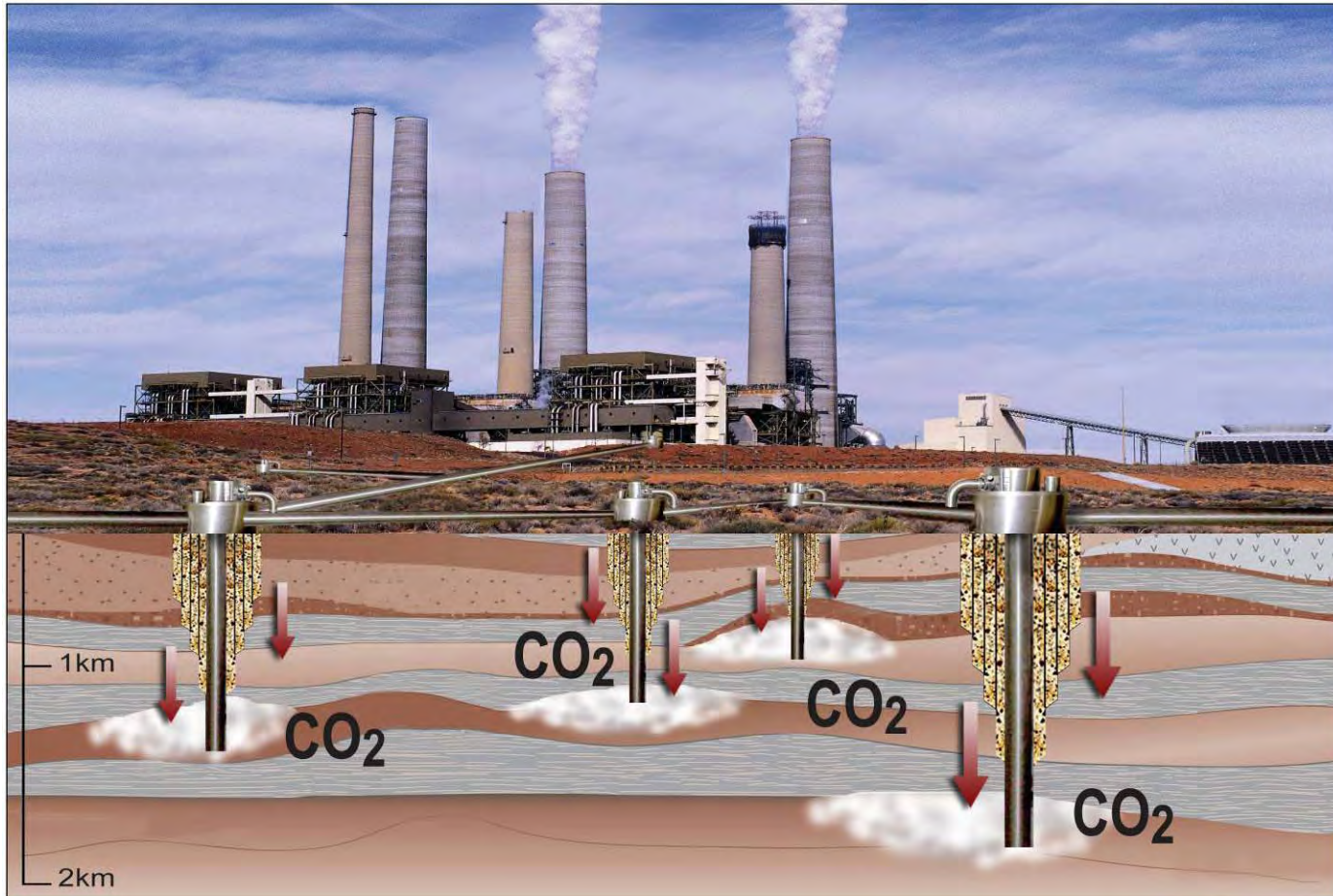


	Deep Geological Systems	Ocean	Solids Mineral
Permanence	M - H, depends on site selection	L- M, depends on site selection	H
Environmental and Safety Impacts	L-M, groundwater and pipelines	M-H, acidification, ecosystems	M, mining for reactants, disposal
Energy Use	M, compression cost	M, compression, shipping	H, high T or grinding for high rates
Cost	L-M, energy, capital plant	H, offshore and shipping, energy	H, energy, reactants and capital plant

H = high M = medium, L = Low



Component Technologies of Carbon Dioxide Capture and Geological Sequestration



Capture



Compression



Pipeline
Transport



Underground
Injection



Types of Rocks



- Igneous rocks

- Rocks formed from cooling magma
- Examples
 - Granite
 - Basalt

Crystalline
Low porosity
Low permeability
Fractures



Granite

- Metamorphic Rocks

- Rocks that have been subjected to high pressures and temperatures after they are formed
- Examples
 - Schist
 - Gneiss

Crystalline
Low porosity
Low permeability
Fractures



Schist

- Sedimentary rocks

- Rocks formed from compaction and consolidation of rock fragments
- Example
 - Sandstone
 - Shale
- Rocks formed from precipitation from solution
- Example
 - Limestone

High porosity
High permeability
Few fractures



Sandstone

© geology.com



What Types of Rocks are Suitable for CO₂ Storage?



- ~~Igneous rocks~~
 - ~~Rocks formed from cooling magma~~
 - ~~Examples~~
 - ~~Granite~~
 - ~~Basalt~~

Crystalline
Low porosity
Low permeability
Fractures



Granite

- ~~Metamorphic Rocks~~
 - ~~Rocks that have been subjected to high pressures and temperatures after they are formed~~
 - ~~Examples~~
 - ~~Schist~~
 - ~~Gneiss~~

Crystalline
Low porosity
Low permeability
Fractures



Schist

- ✓ **Sedimentary rocks**

- Rocks formed from compaction and consolidation of rock fragments
- Example
 - Sandstone
 - Shale
- Rocks formed from precipitation from solution
- Example
 - Limestone

High porosity
High permeability
Few fractures

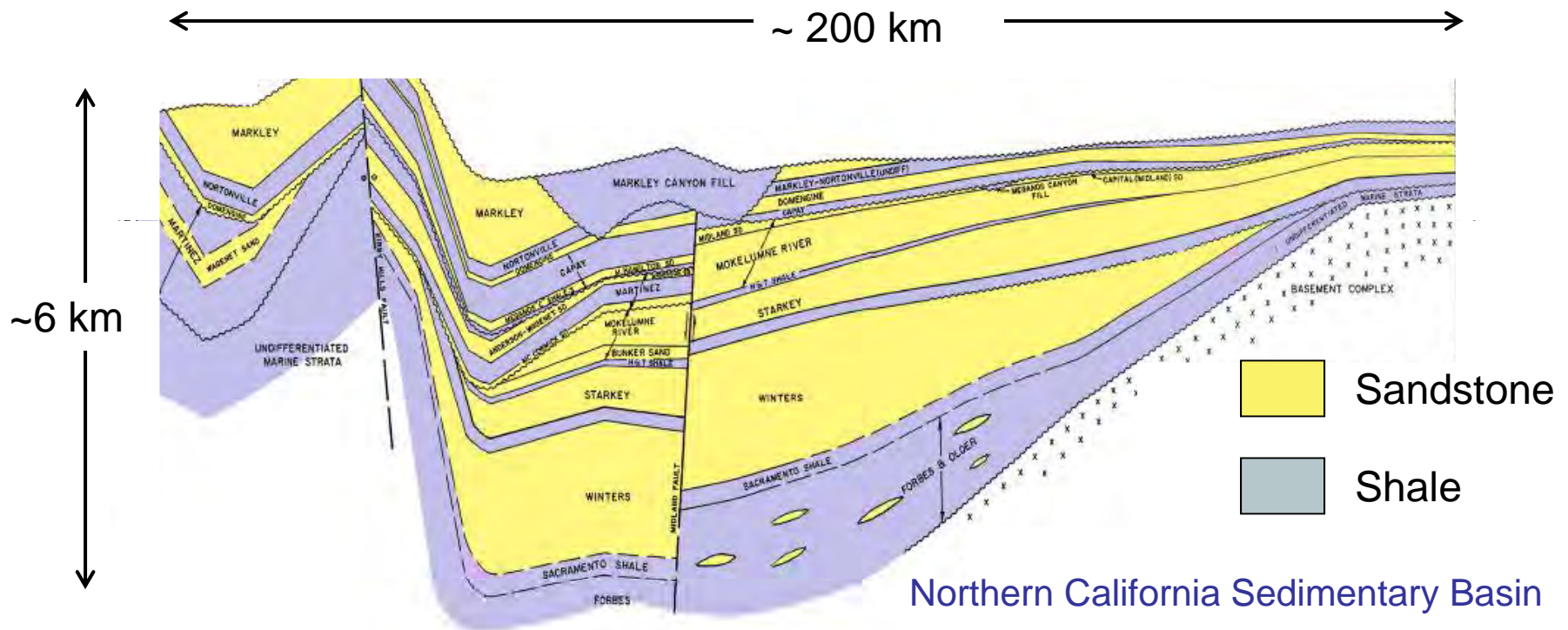


Sandstone

© geology.com



A Cross Section of Typical Sedimentary Basin



Example of a sedimentary basin with alternating layers of coarse and fine textured sedimentary rocks.

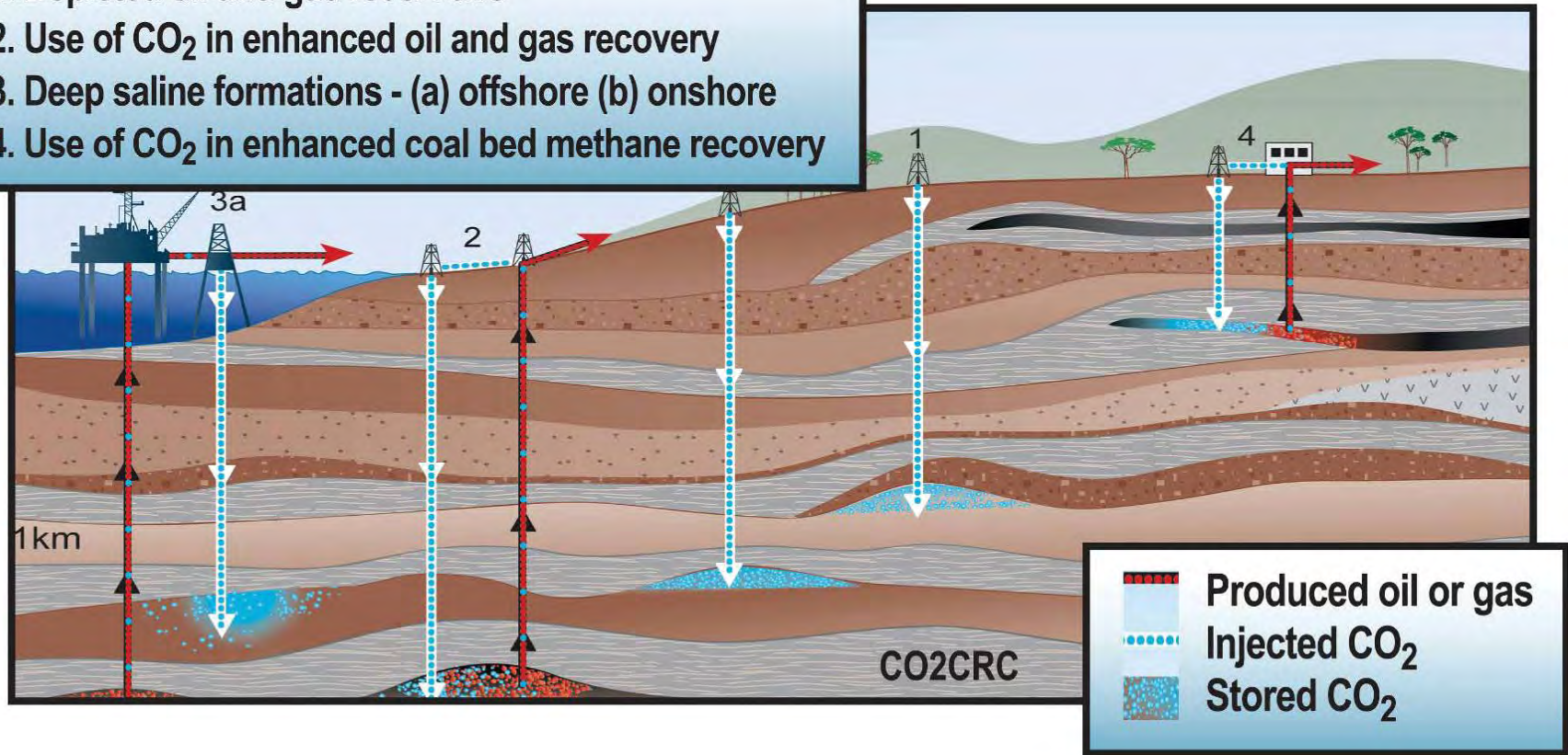


Options for Geological Storage



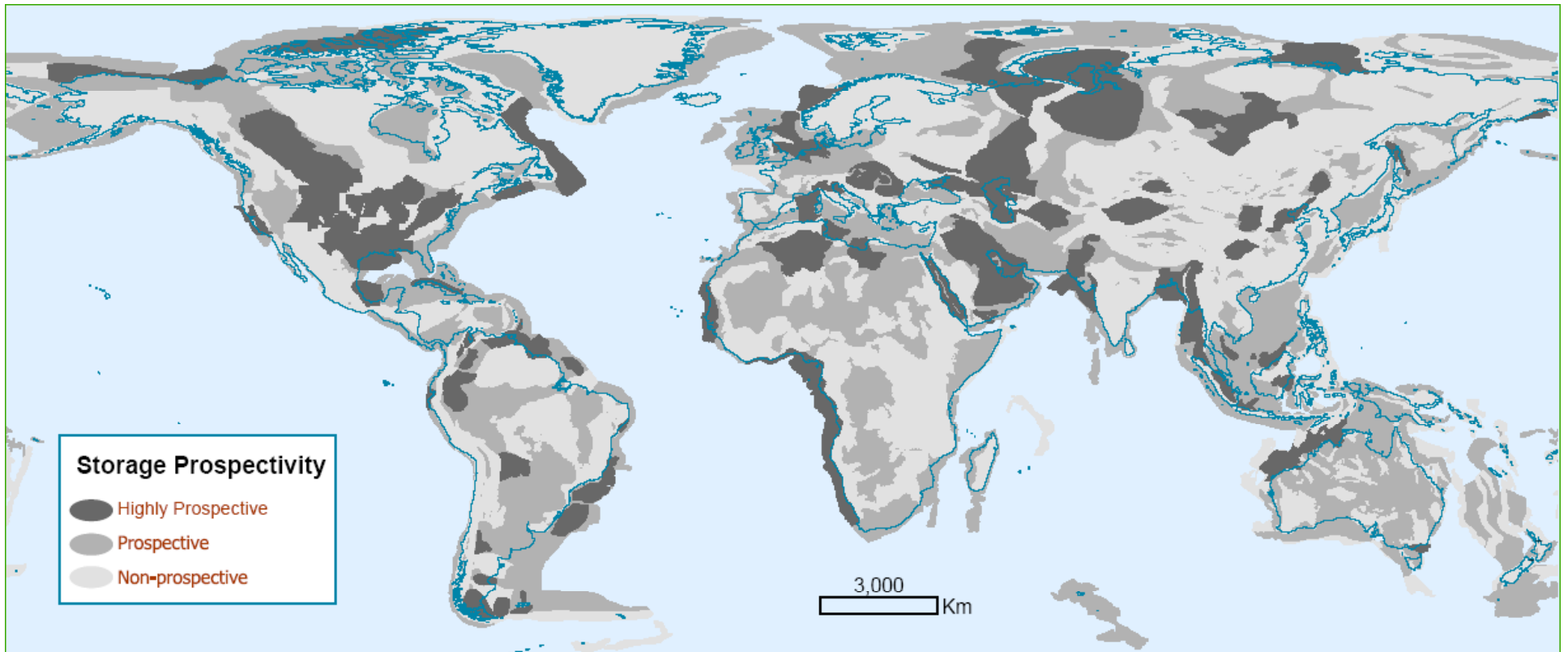
Overview of Geological Storage Options

1. Depleted oil and gas reservoirs
2. Use of CO₂ in enhanced oil and gas recovery
3. Deep saline formations - (a) offshore (b) onshore
4. Use of CO₂ in enhanced coal bed methane recovery





Global Distribution of Prospective Sequestration Sites



Potential sequestration sites are broadly distributed around the globe.



World Wide Capacity Estimates



Reservoir Type	Lower Estimate of Global Storage Capacity (GtCO ₂)	Upper Estimate of Global Storage Capacity (GtCO ₂)
Oil and gas fields	675 ^a	900 ^a
Coal seams (ECBM)	3–15	200
Saline aquifers	1,000	~ 10,000

a. Estimates would be 25% larger if undiscovered reserves were included. IPCC, 2005

3,283 to 12,200 Gt CO₂

Current Estimates for Saline Aquifer Storage Capacity in North America (U.S. DOE)

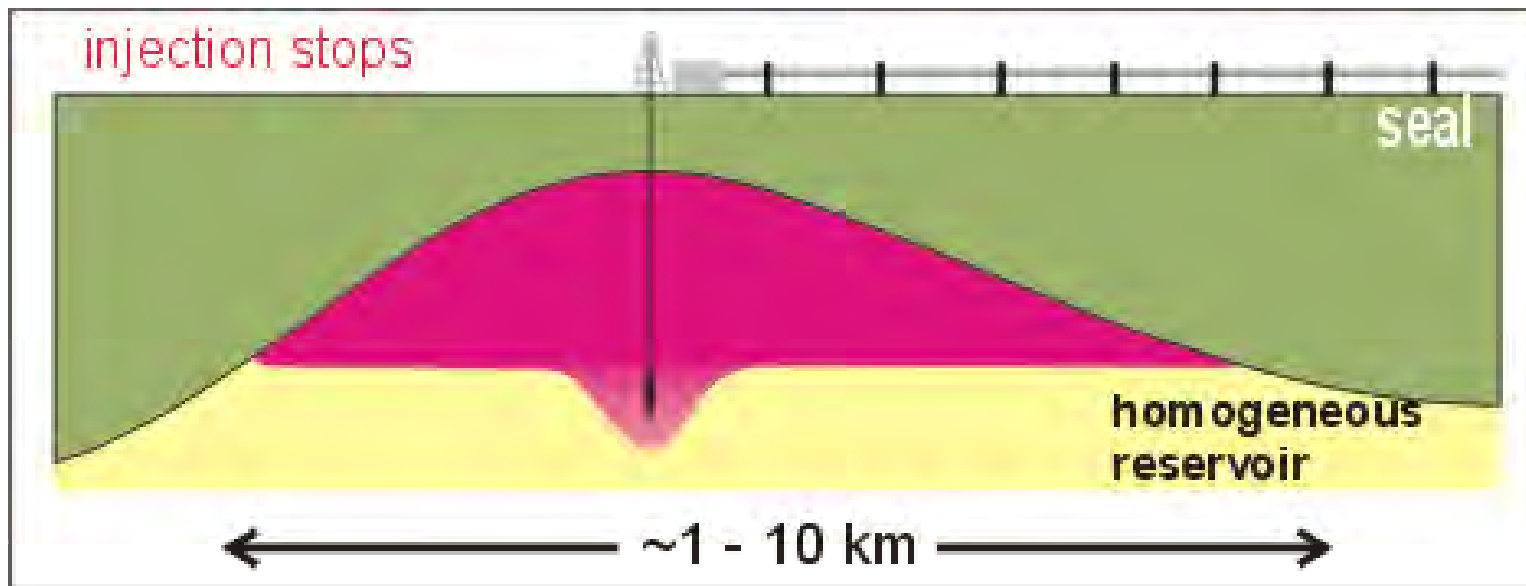
In aggregate...sufficient for 100 years or more



Basic Concept of Geological Sequestration of CO₂



- Injected at depths of 1 km or deeper into rocks with tiny pore spaces
- Primary trapping
 - Beneath seals of low permeability rocks



Courtesy of John Bradshaw

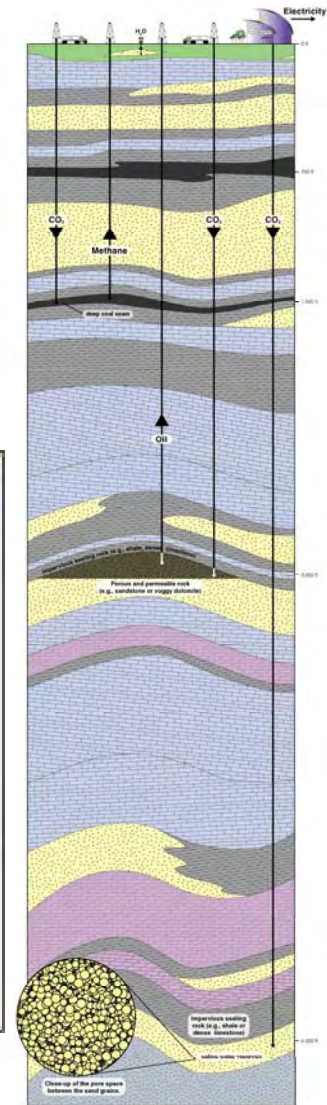


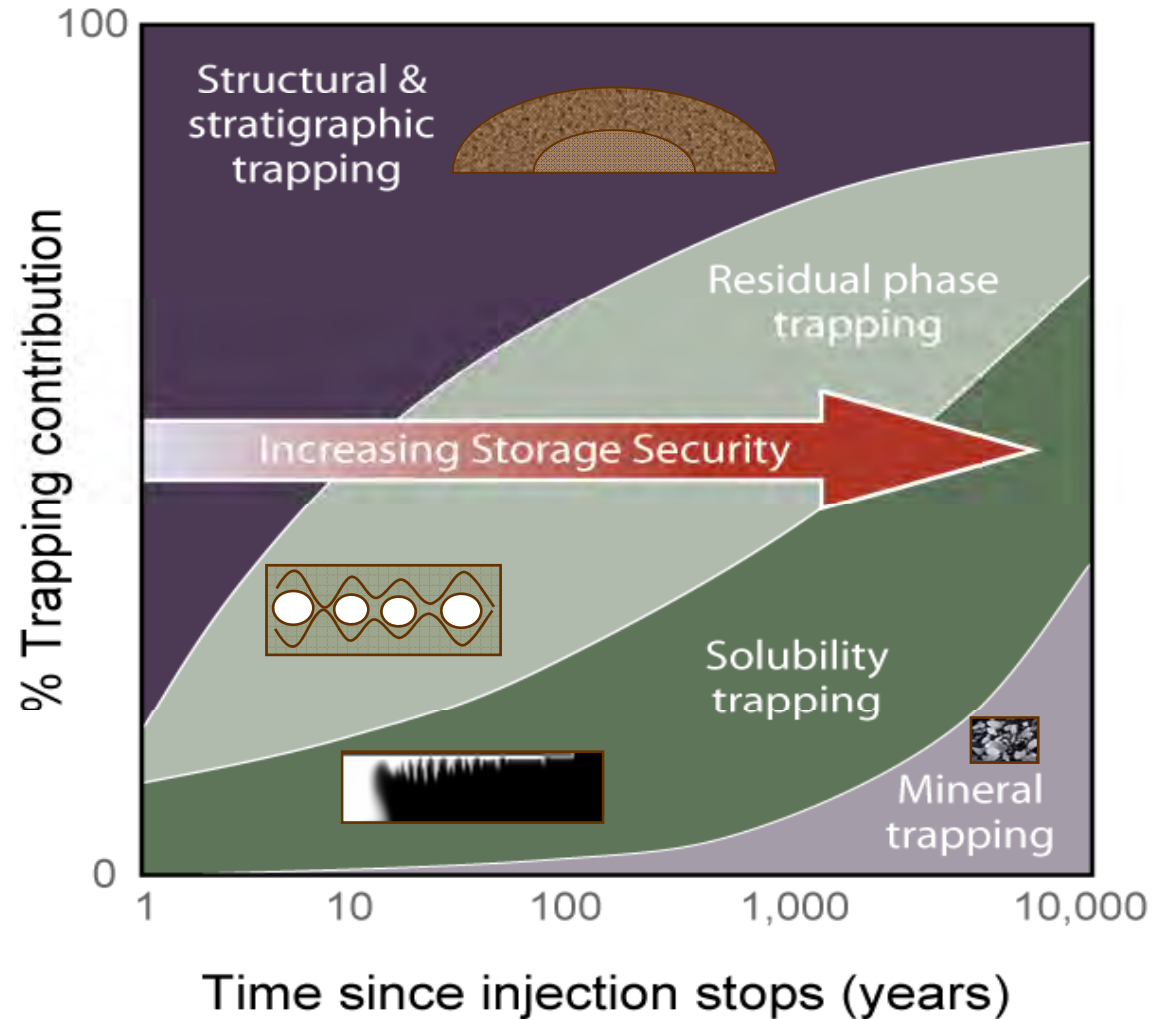
Image courtesy of ISGS and MGSC



Secondary Trapping Mechanisms Increase Over Time



- Solubility trapping
 - CO₂ dissolves in water
- Residual gas trapping
 - CO₂ is trapped by capillary forces
- Mineral trapping
 - CO₂ converts to solid minerals
- Adsorption trapping
 - CO₂ adsorbs to coal





Expert Opinion about Storage Safety and Security

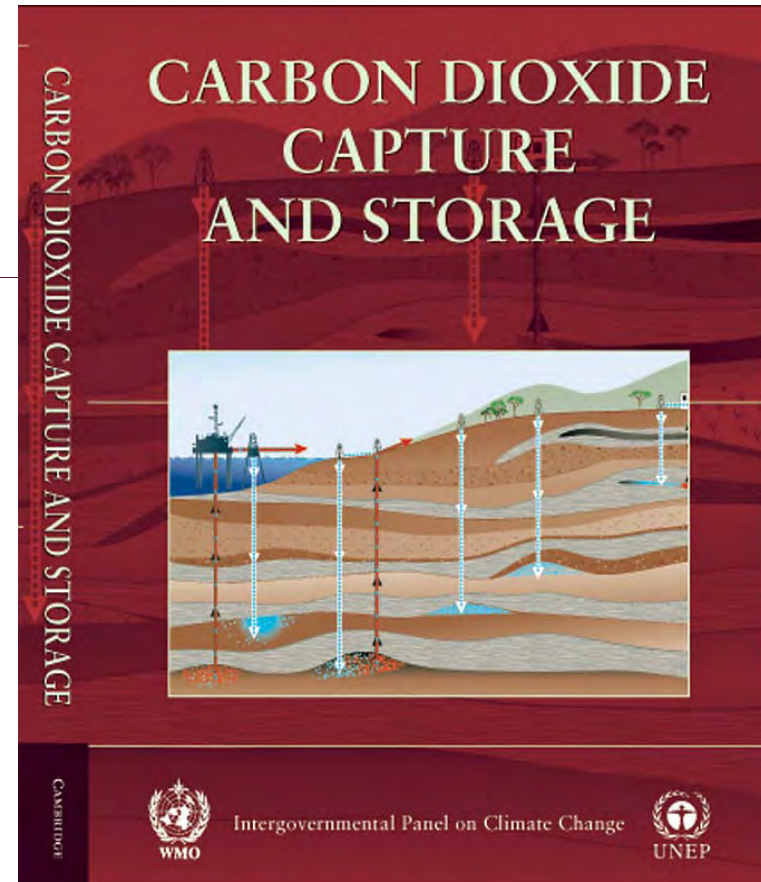


“ Observations from engineered and natural analogues as well as models suggest that the fraction retained in appropriately selected and managed geological reservoirs is very likely to exceed 99% over 100 years and is likely** to exceed 99% over 1,000 years.”*

*“ With **appropriate site selection** informed by available subsurface information, a **monitoring program** to detect problems, a **regulatory system**, and the **appropriate use of remediation methods** to stop or control CO₂ releases if they arise, the **local health, safety and environment risks of geological storage would be comparable to risks of current activities such as natural gas storage, EOR, and deep underground disposal of acid gas.**”*

* "Very likely" is a probability between 90 and 99%.

** Likely is a probability between 66 and 90%.

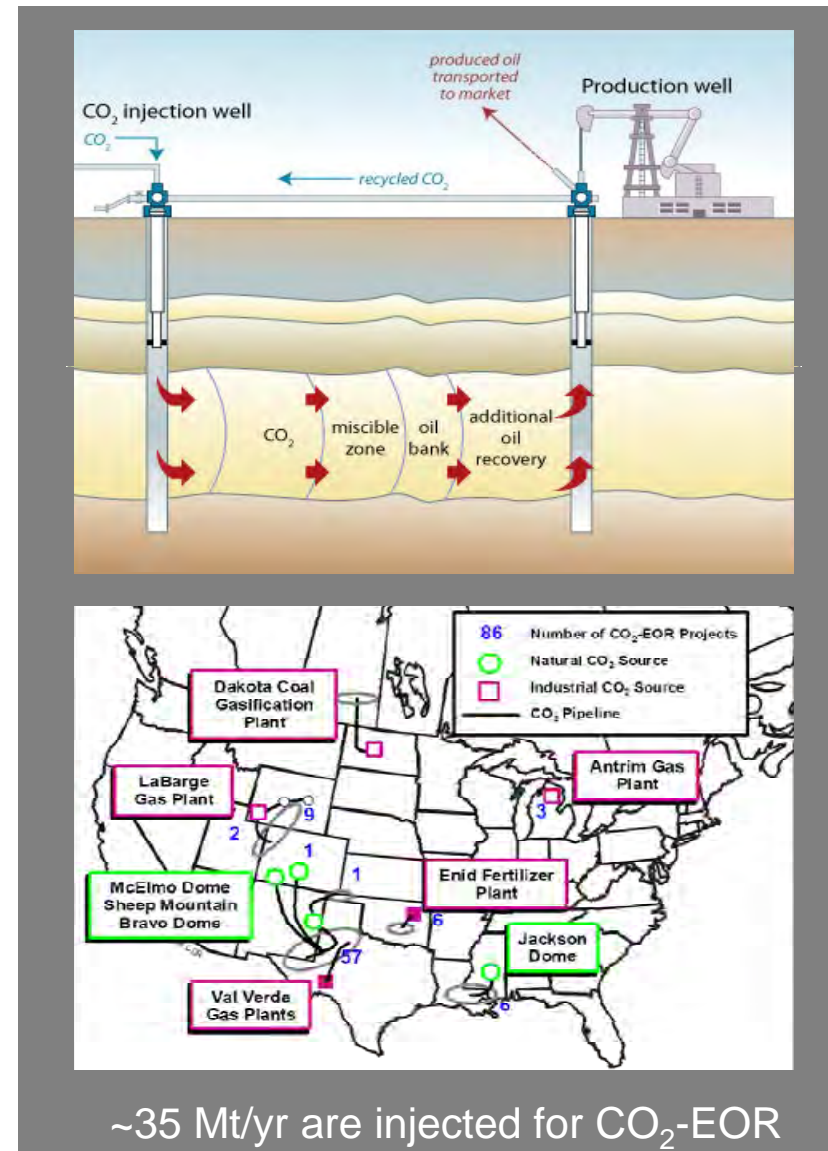




Evidence to Support these Conclusions

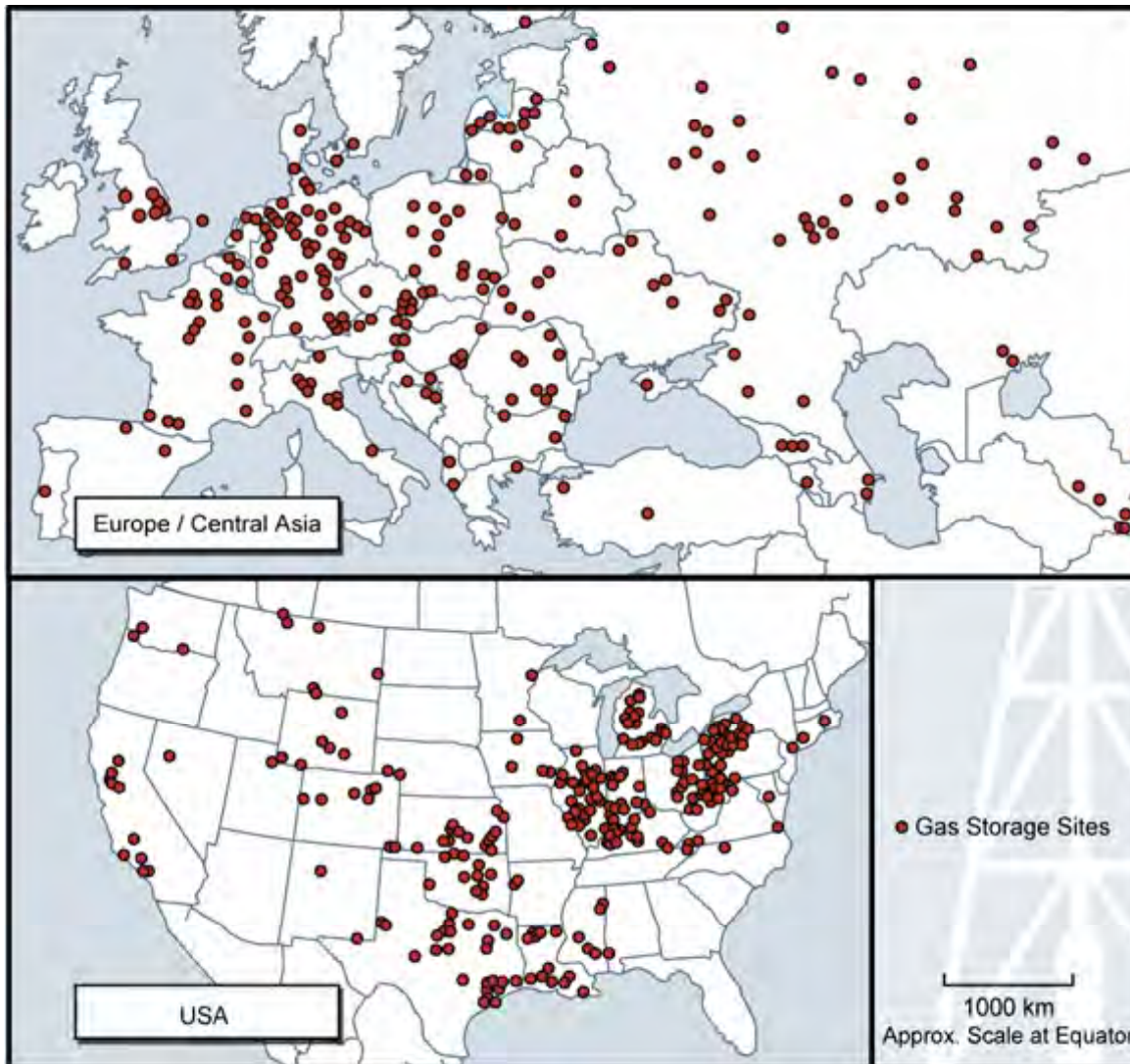


- Natural analogs
 - Oil and gas reservoirs
 - CO₂ reservoirs
- Performance of industrial analogs
 - 40+ years experience with CO₂ EOR
 - 100 years experience with natural gas storage
 - Acid gas disposal
- 25+ years of cumulative performance of actual CO₂ storage projects (~ 40 Mt injected to date)
 - Sleipner, off-shore Norway, 1996
 - Weyburn, Canada, 2000
 - In Salah, Algeria, 2004
 - Snøhvit, Norway, 2008





Natural Gas Storage



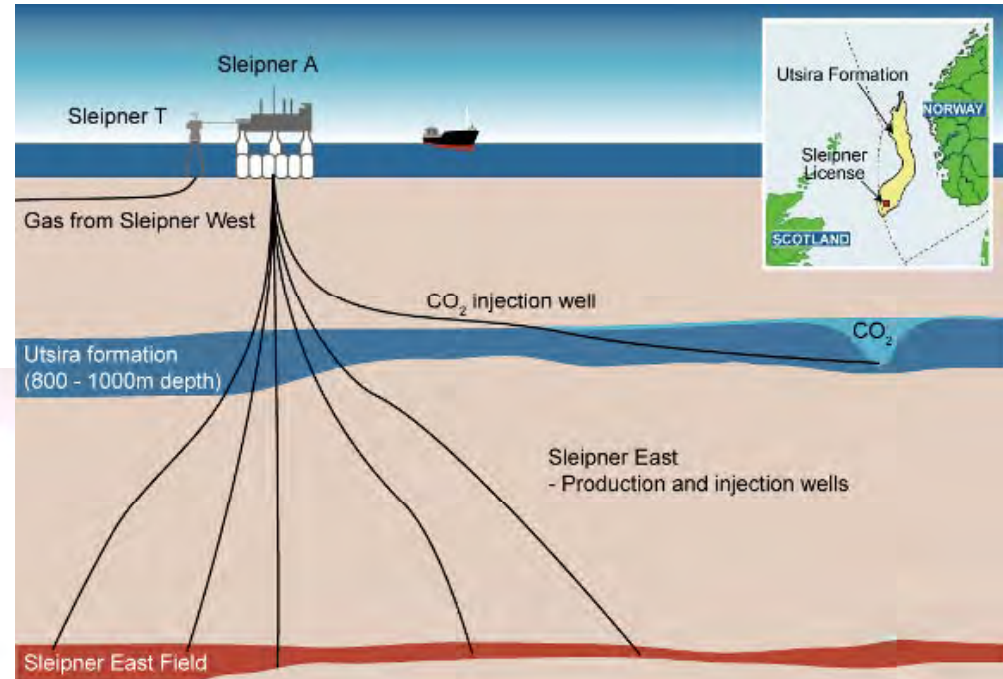
- Seasonal storage to meet winter demands for natural gas
- Storage formations
 - Depleted oil and gas reservoirs
 - Aquifers
 - Caverns



Sleipner Project, North Sea



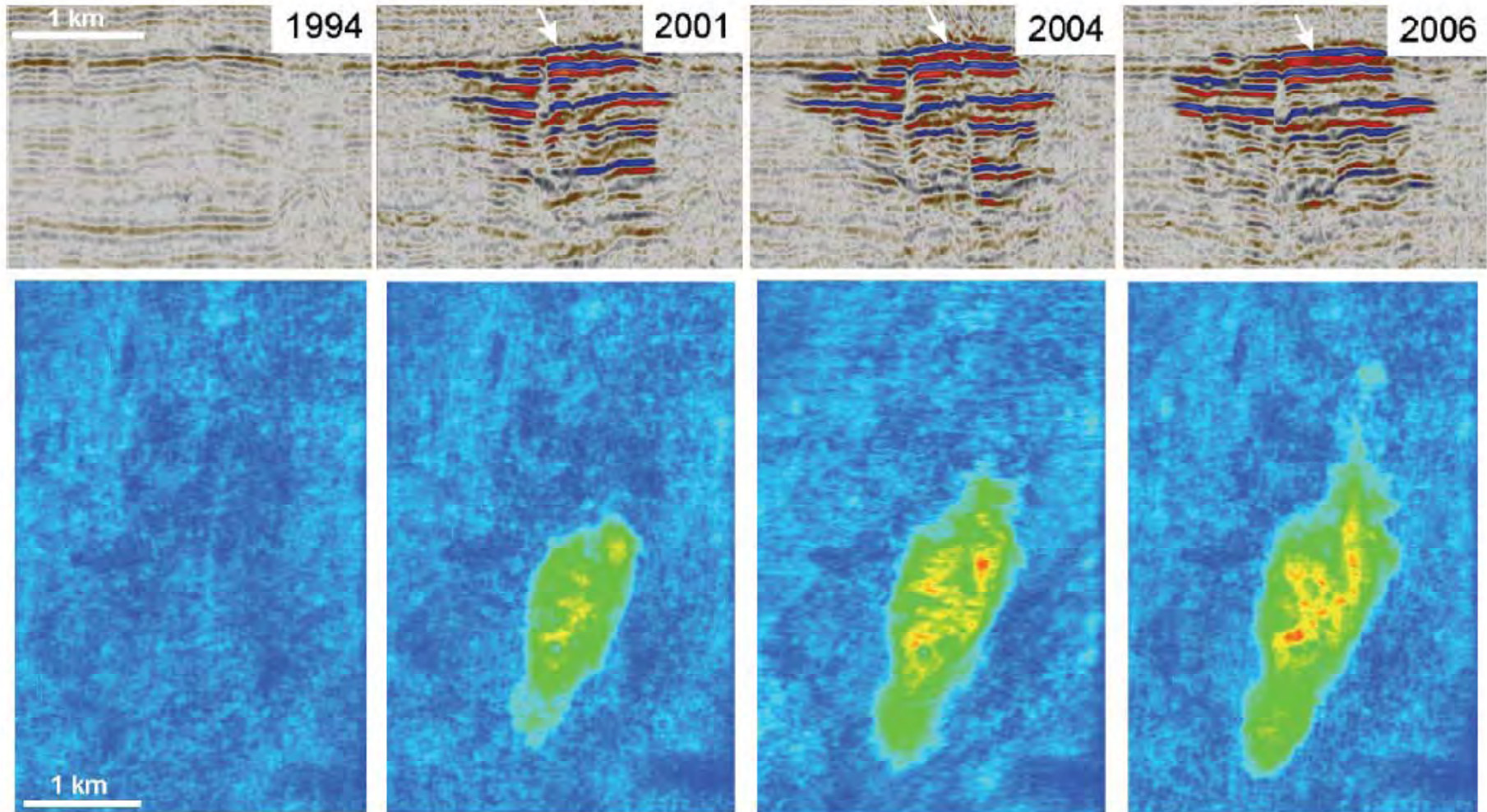
- 1996 to present
- 1 Mt CO₂ injection/yr
- Seismic monitoring



Courtesy Statoil



Seismic Monitoring at Sleipner

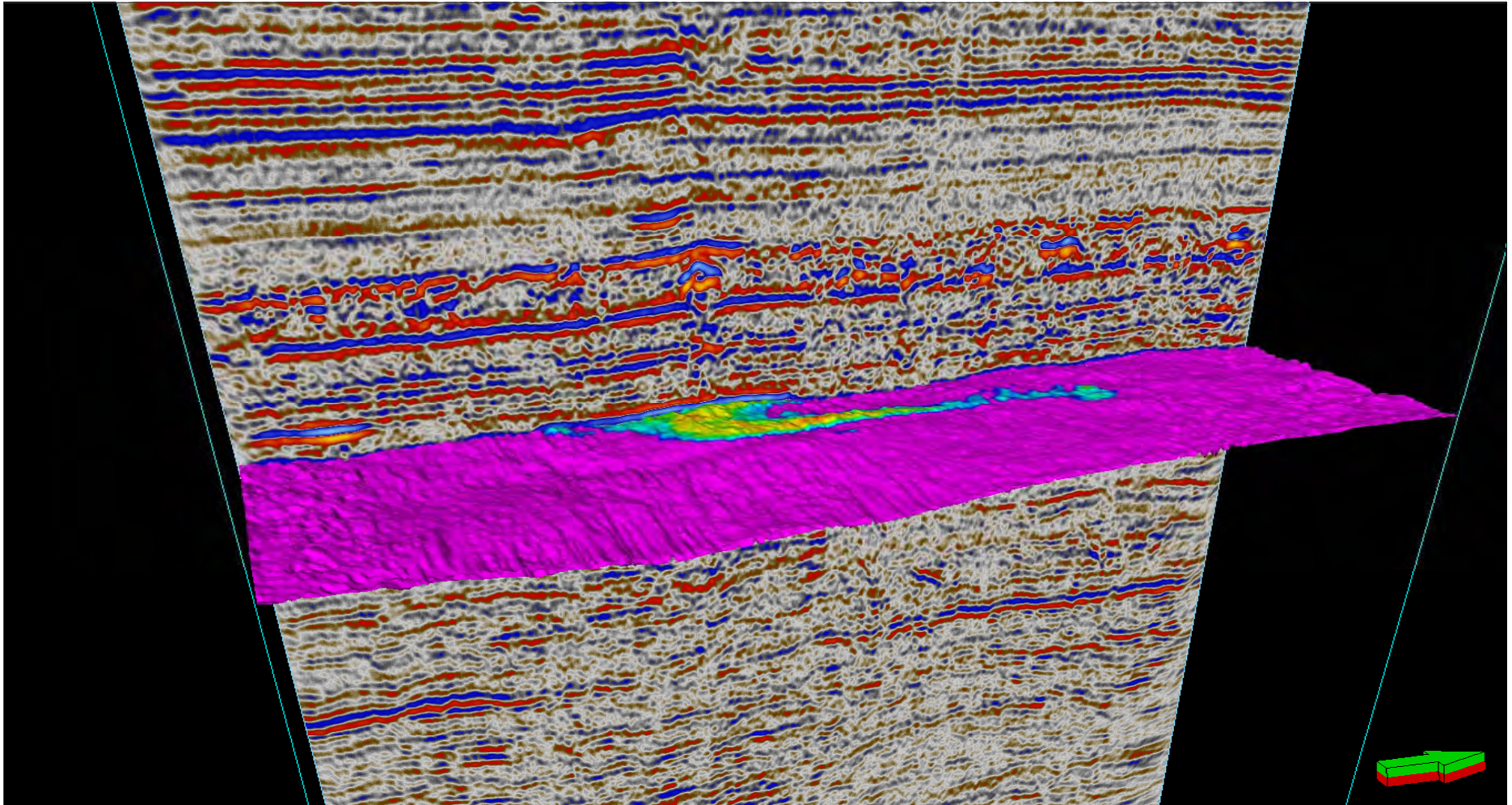


Courtesy, Andy Chadwich, BGS

Seismic imaging at Sleipner, North Sea



Plume and topmost layer 2001 - 2006



From Andy Chadwick, BGS, 2010



Key Elements of a Geological Storage Safety and Security Strategy

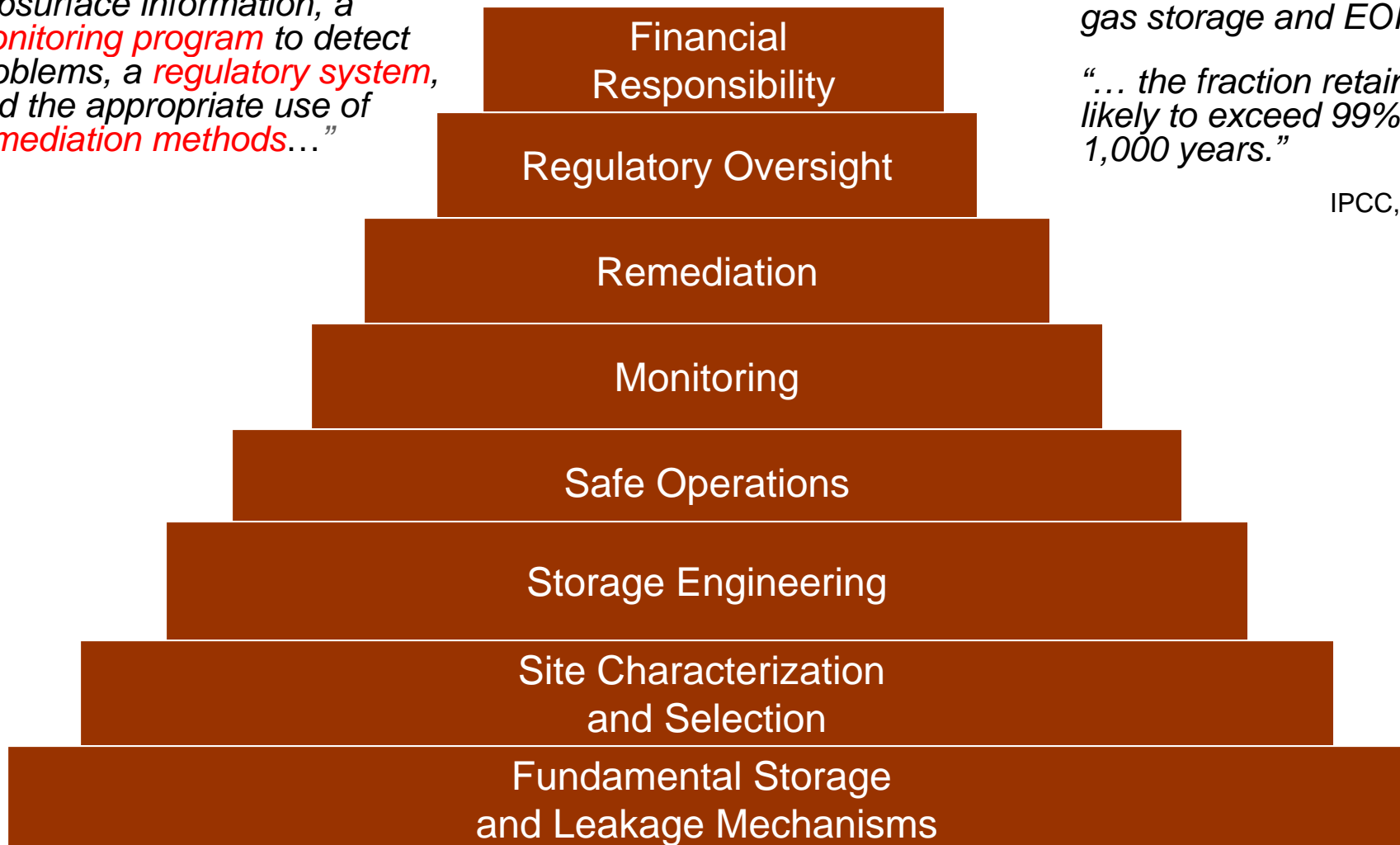


*“ With **appropriate site selection** informed by available subsurface information, a **monitoring program** to detect problems, a **regulatory system**, and the appropriate use of **remediation methods**...”*

“... risks similar to existing activities such as natural gas storage and EOR.”

“... the fraction retained is likely to exceed 99% over 1,000 years.”

IPCC, 2005





X-ray Micro-tomography at the Advanced Light Source



Micro-tomography Beamline

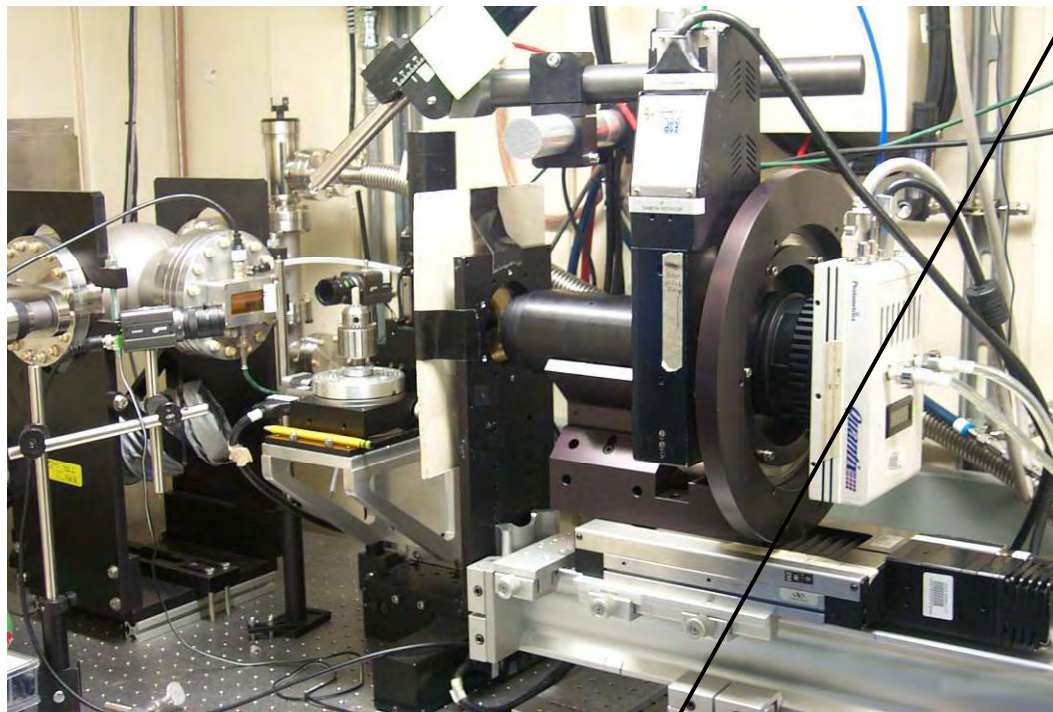
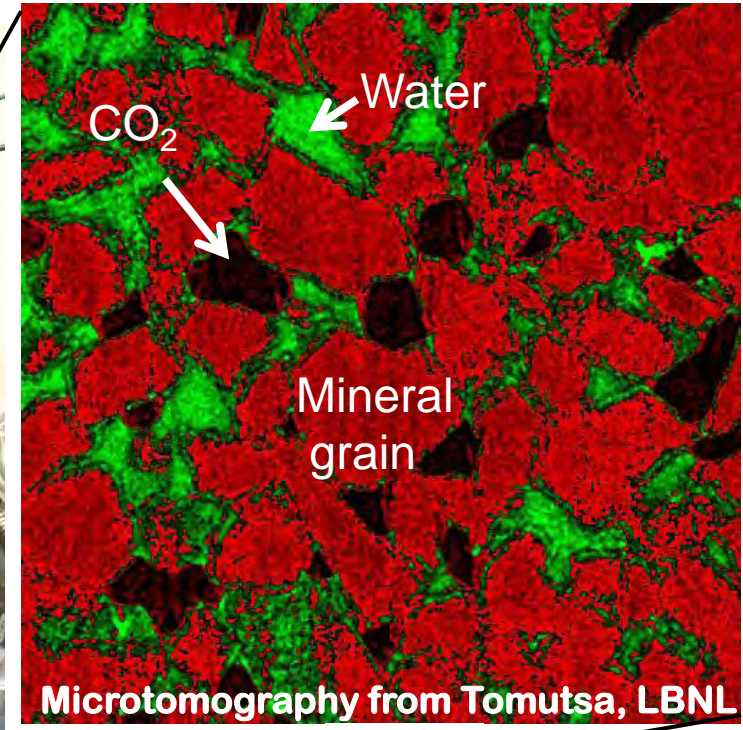


Image of Rock with CO₂



Resolution ~ 5 μm

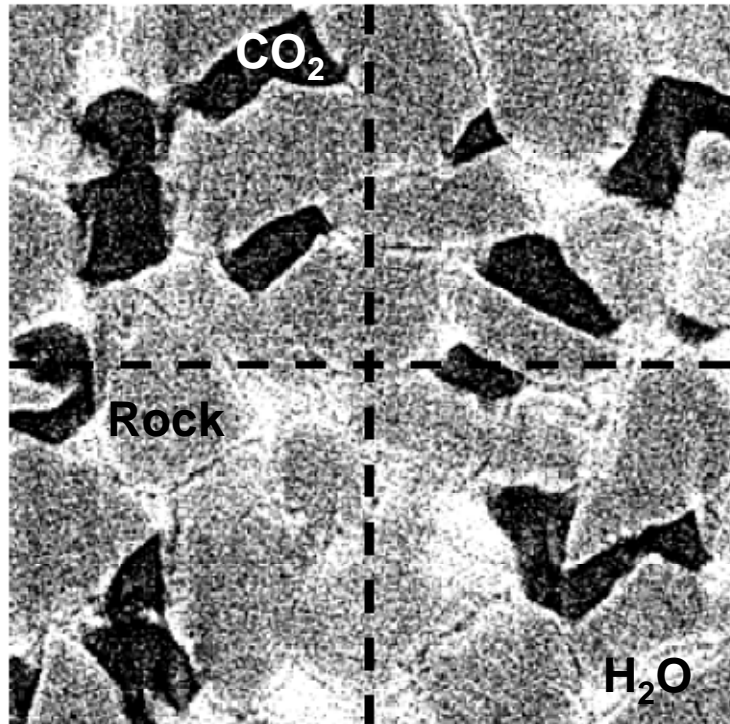
Benson et al., GHGT-8, 2007.



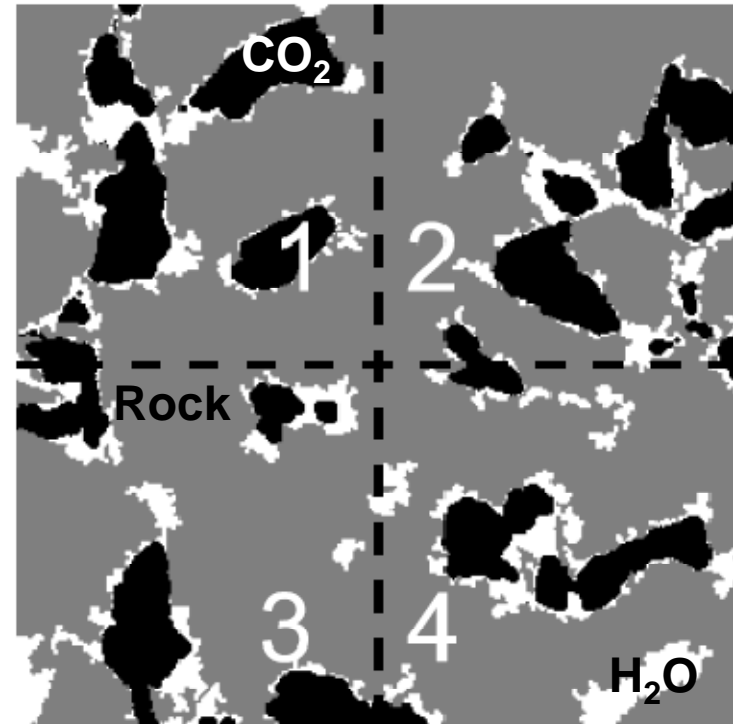
Pore-Scale Measurement and Modeling of Multiphase Flow of CO₂ and Brine



Measured at the ALS
Microtomography Beamline



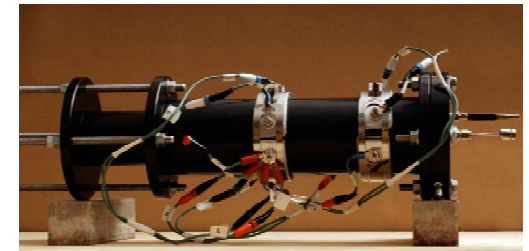
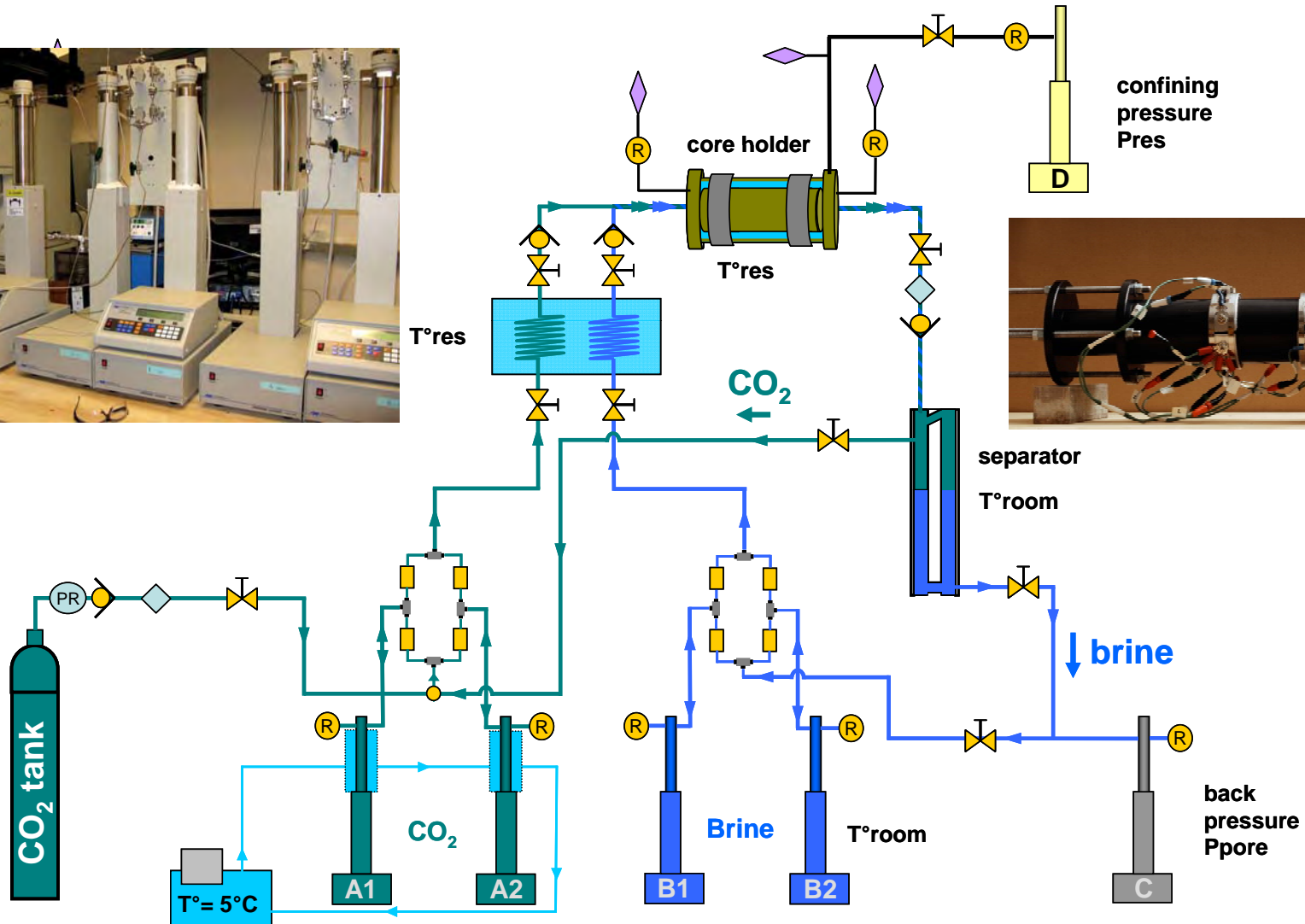
Calculated Using the Maximum
Inscribed Spheres Method



Silin, Tomutsa, Benson and Patzek, 2010. Microtomography and Pore-Scale Modeling of Two-Phase Fluid Distribution, Transport in Porous Media, Submitted.

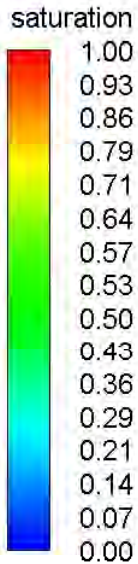


Core-Scale Multi-Phase Flow Laboratory

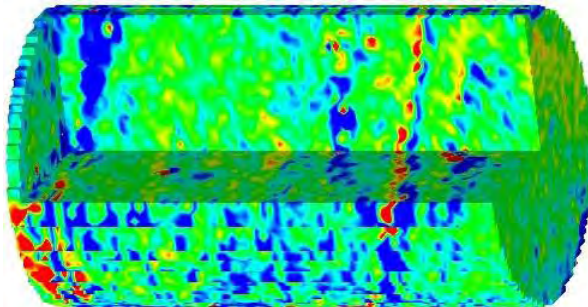




Multiphase Flow of CO₂ and Brine

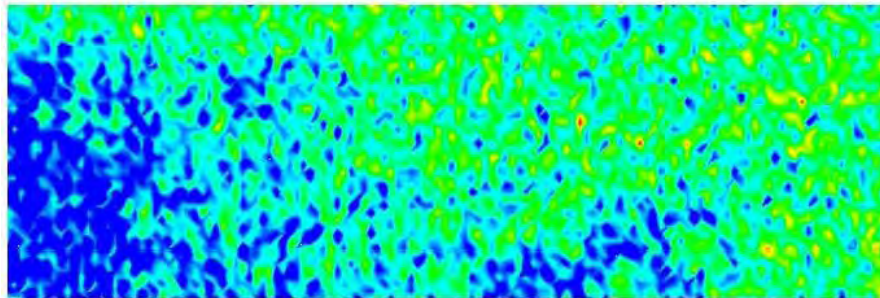


Influence of Heterogeneity



Waare C Sandstone

Influence of Buoyancy



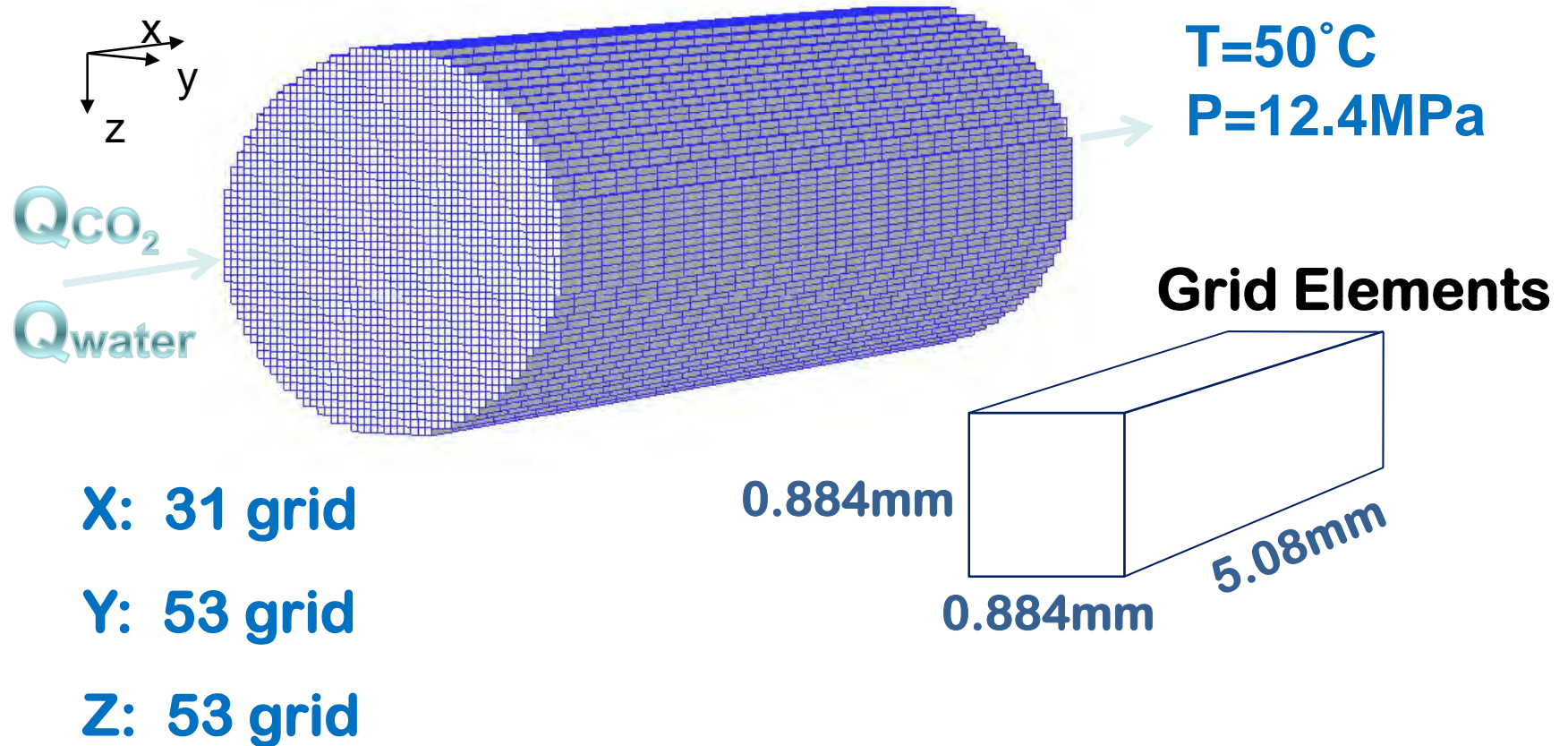
Berea Sandstone

- What fraction of the pore space will be occupied?
- What will be the footprint of the plume?
- How much dissolution and capillary trapping can be expected?

Is the current approach for simulating multiphase flow good enough to answer these questions?



Simulation Grid



X: 31 grid

Y: 53 grid

Z: 53 grid

Total Grid = 64,635 Rectangular Elements

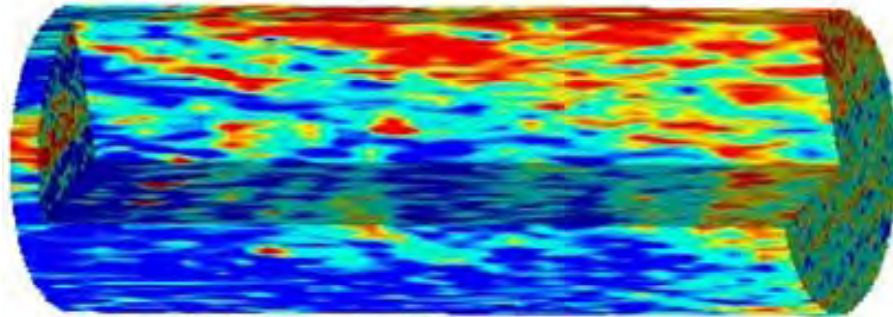
Kuo, C.-W., Krause, M. Perrin, J.C., and S. M. Benson, 2009. Effect of Small Scale Heterogeneity on Multiphase Flow of CO₂ and Brine, 8th Annual NETL Carbon Sequestration Conference, Pittsburg, PA, May 5-8, 2009.



Comparison Between Models and Data

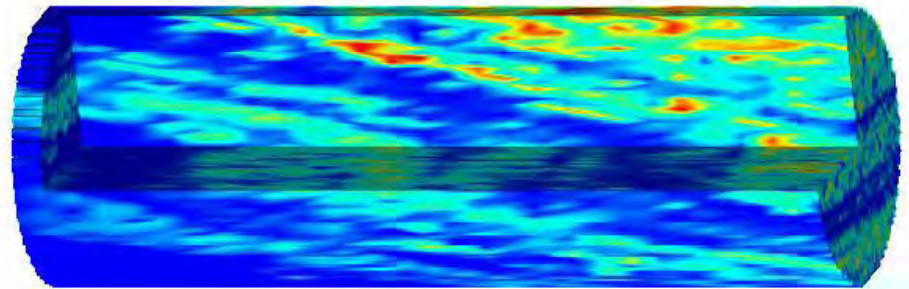


Experiment

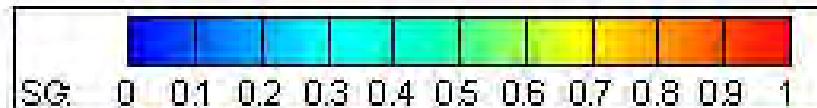


$SCO_2 = 20.9\%$

High Contrast Model



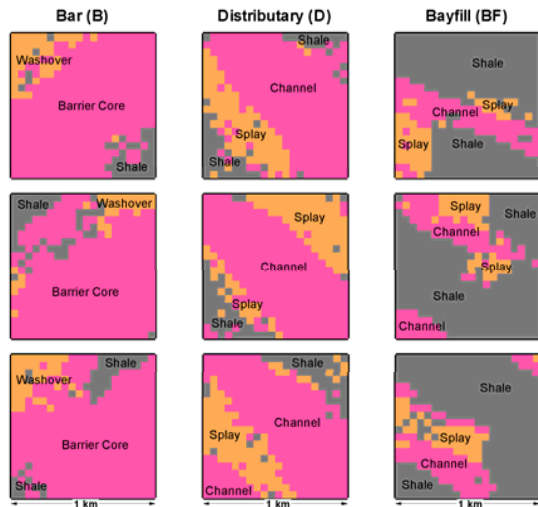
$SCO_2 = 15.25\%$



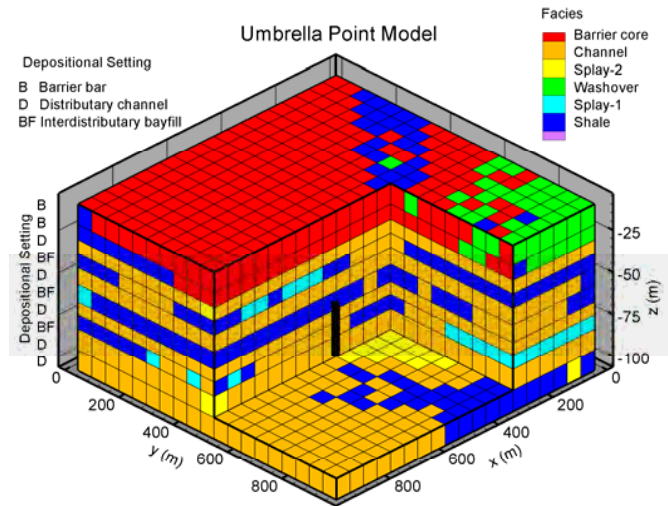
- Qualitative agreement between experiments and simulations is good
- Insights gained from core-scale experiments can improve understanding of the role of heterogeneity and buoyancy on capacity
- Improved rock properties model is needed



High Performance Computing Needed to Assess Capacity in Saline Aquifers



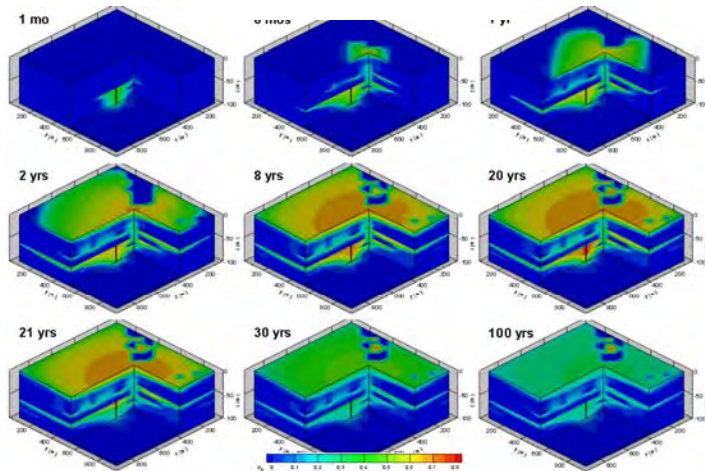
Models



Geology

Simulations

Statistics



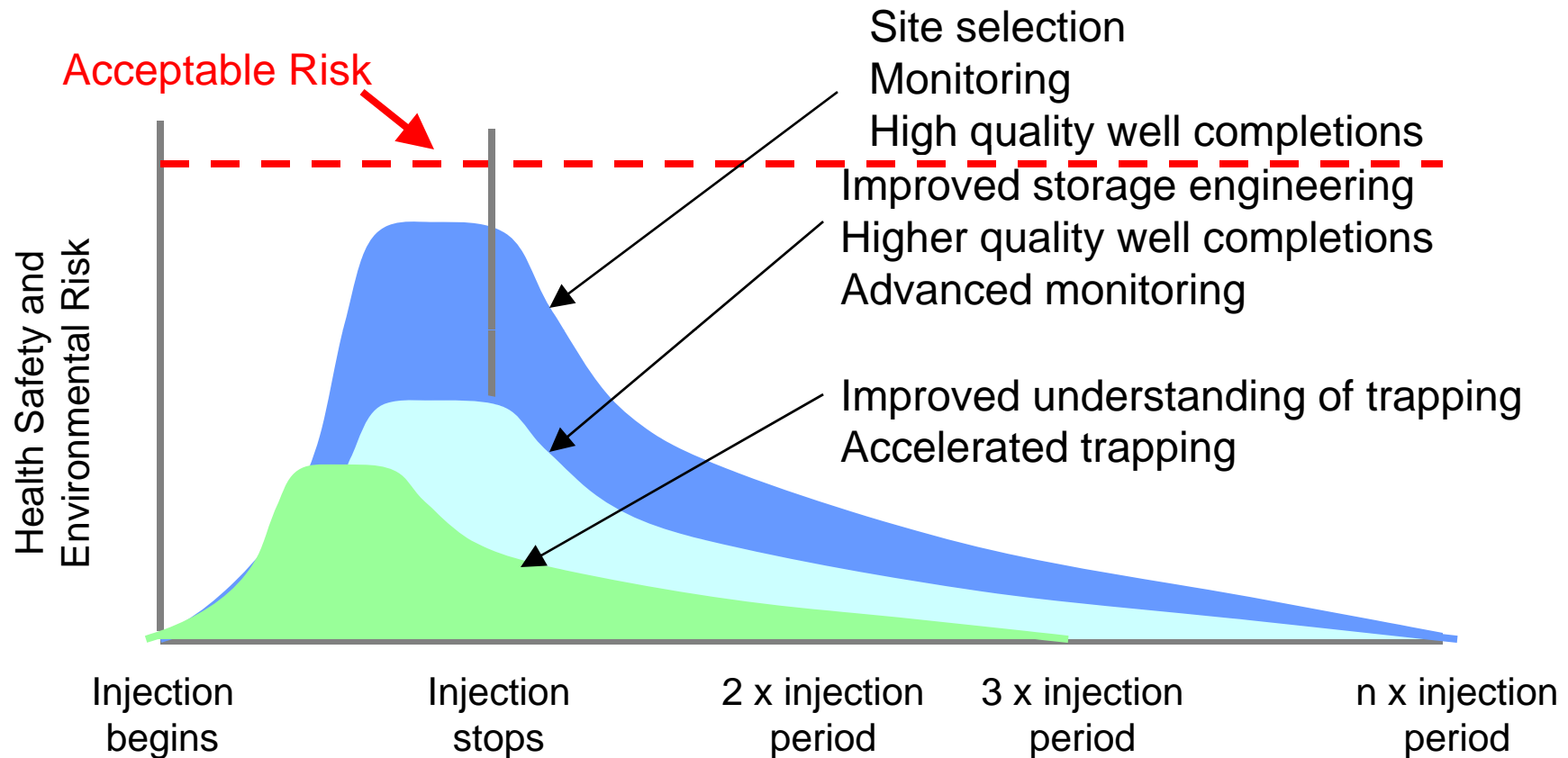
“Rules of Thumb”

CO₂ Storage Capacity = 1 to 4% Total Pore Volume¹

¹Values used in the North American Carbon Sequestration Atlas, 2008



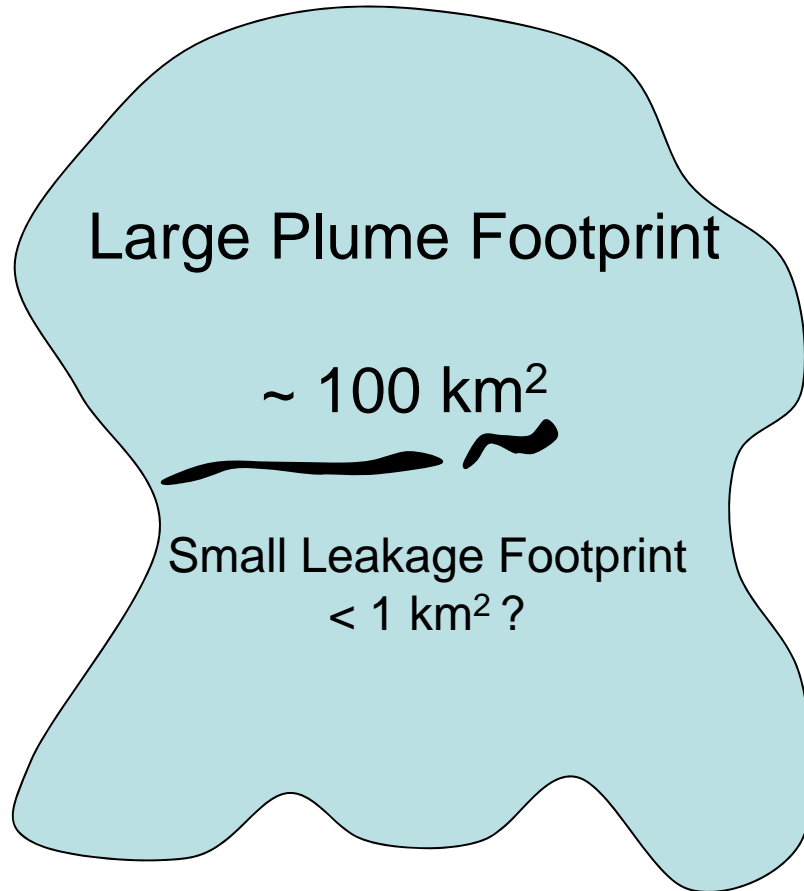
Storage Engineering



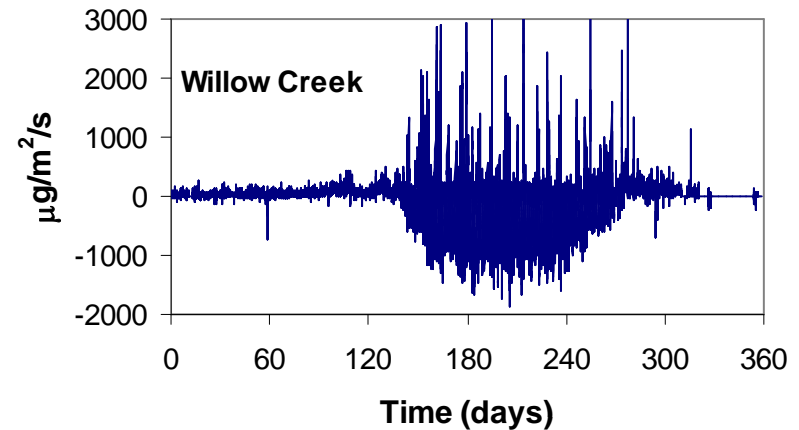
- *How can storage security be enhanced with advanced engineering?*
- *Can sub-optimal sites be used for storage with advanced storage engineering?*



Monitoring Challenges



Large Fluctuations in Background CO_2 Fluxes



Courtesy of Ken Davis and Paul Bolstad



Isotope Detection Methodology



- Surveys of the site were made by traversing the site (100mX100m) at semi-regular intervals
- The gas inlet was about 10 cm above the ground
- Gas concentrations ($^{12}\text{CO}_2$, $^{13}\text{CO}_2$) were measured every 1-2 seconds along with GPS coordinates and time
- Some areas were inaccessible due to the presence of sensitive equipment

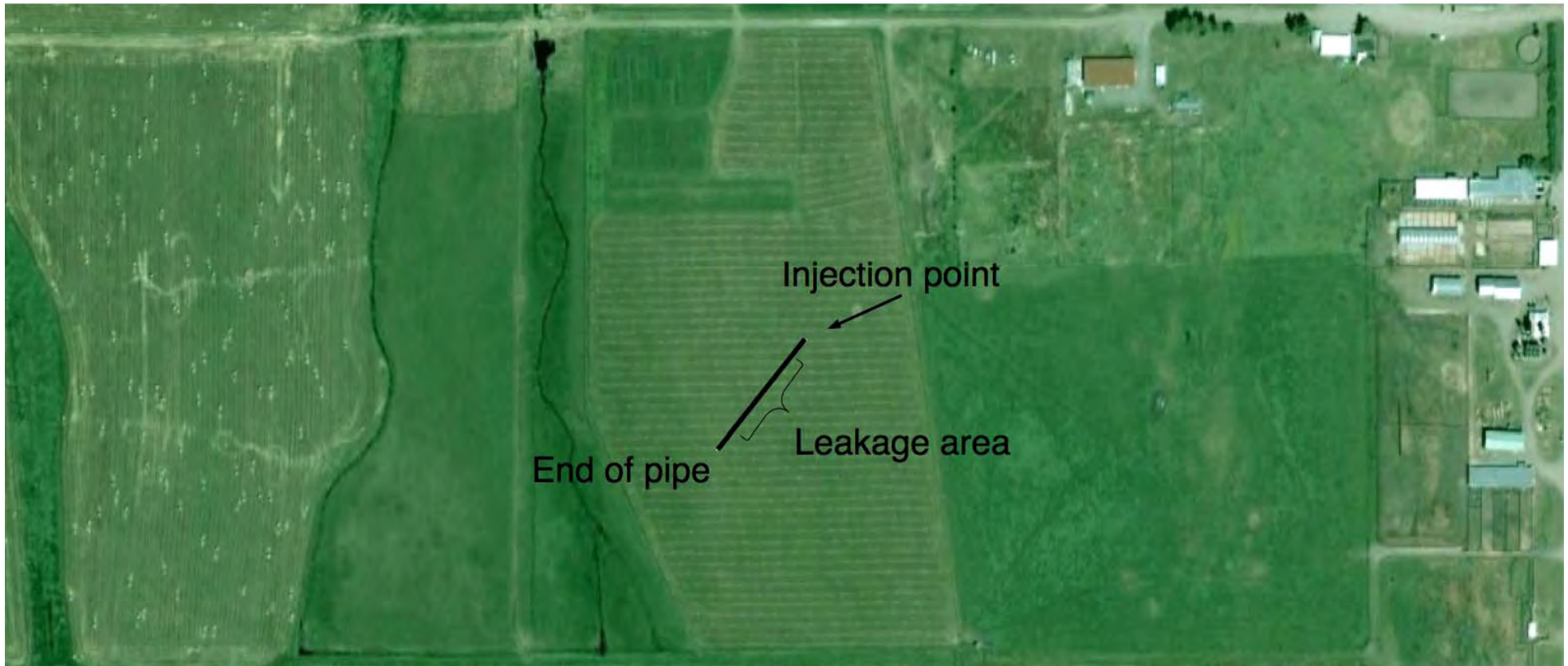
Krevor et al., 2010. International Journal of Greenhouse gas Control, in press.



Methodology



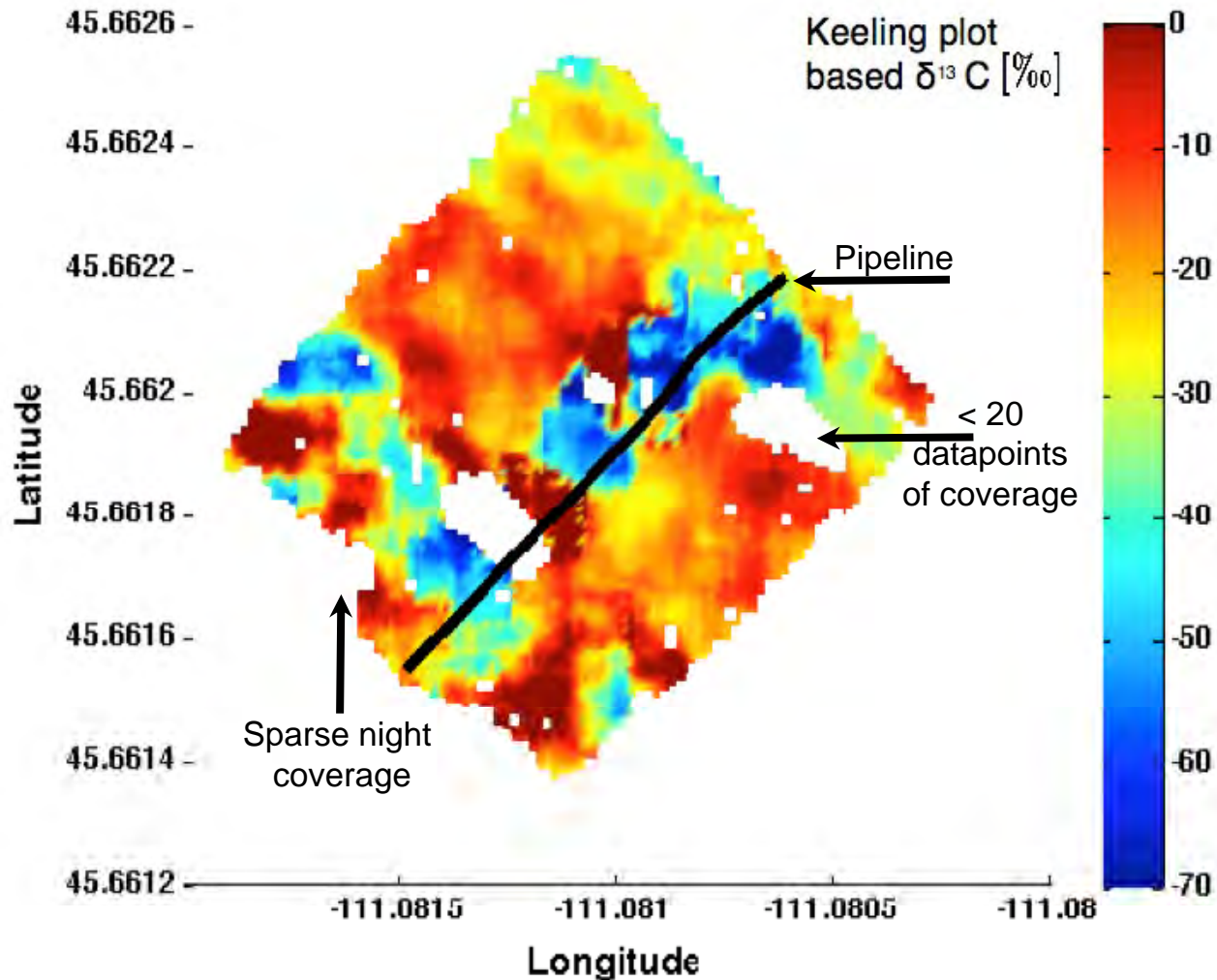
An intentional leak of CO₂ has been designed at the ZERT experimental facility in Bozeman, Montana.



- 0.2 t/day CO₂ was released over a 30 days (.001% Leak)
- 100-meter long horizontal well
- 1-3 meters below the surface
- The injected CO₂ had a distinct ¹³CO₂ signature ($\delta^{13}\text{C} = -50$) relative to atmospheric ($\delta^{13}\text{C} = -8$) and plant respiration ($\delta^{13}\text{C} = -27$)



Results



The plot clearly identifies a source CO_2 term with characteristically negative $\delta^{13}\text{C}$ values along the pipeline where leakage is known to occur



Institutional Issues



- Regulations for storage: siting, monitoring, performance specifications
- Long term liability for stored CO₂
- Legal framework for access to underground pore space
- Carbon trading credits for CCS
- Clean Development Mechanism (CDM) credits for CCS
- Public acceptance

None is likely to be a show stopper, but all require effort to resolve.



Research and Actions Needed to Accelerate Deployment of CCS



- Large scale integrated demonstration projects
- Lower the cost and decrease energy use for of all types of capture
- Increase confidence in geological storage permanence
 - Making less than ideal site adequate
- Combining biomass gasification with sequestration for negative emissions
- Finding ways to reuse CO₂ on the scale of emissions (e.g. scale of energy use)
- Address institutional issues effectively



Phases of CO₂ for CCS System

